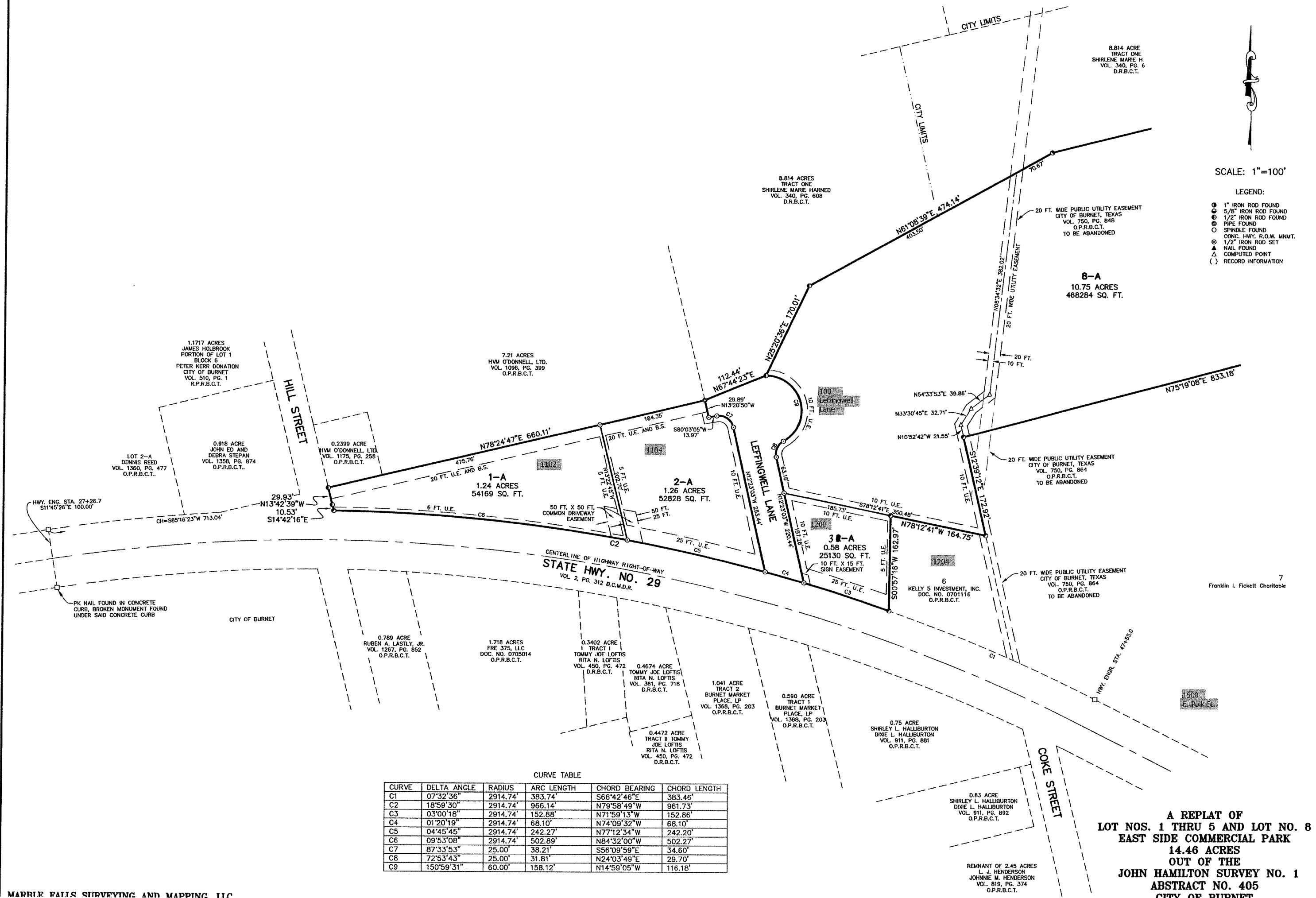


SCALE: 1"=100'

- LEGEND:
- 1" IRON ROD FOUND
 - 5/8" IRON ROD FOUND
 - 1/2" IRON ROD FOUND
 - PIPE FOUND
 - SPINDLE FOUND
 - CONC. HWY. R.O.W. MMNT.
 - 1/2" IRON ROD SET
 - ▲ NAIL FOUND
 - △ COMPUTED POINT
 - () RECORD INFORMATION



CENTERLINE OF HIGHWAY RIGHT-OF-WAY
STATE HWY. NO. 29
 VOL. 2, PG. 312 B.C.M.D.R.

CURVE TABLE

CURVE	DELTA ANGLE	RADIUS	ARC LENGTH	CHORD BEARING	CHORD LENGTH
C1	07°32'36"	2914.74'	383.74'	S66°42'46"E	383.46'
C2	18°59'30"	2914.74'	966.14'	N79°58'49"W	961.73'
C3	03°00'18"	2914.74'	152.88'	N71°59'13"W	152.86'
C4	01°20'19"	2914.74'	68.10'	N74°09'32"W	68.10'
C5	04°45'45"	2914.74'	242.27'	N77°12'34"W	242.20'
C6	09°53'08"	2914.74'	502.89'	N84°32'00"W	502.27'
C7	87°33'53"	25.00'	38.21'	S56°09'59"E	34.60'
C8	72°53'43"	25.00'	31.81'	N24°03'49"E	29.70'
C9	150°59'31"	60.00'	158.12'	N14°59'05"W	116.18'

A REPLAT OF
 LOT NOS. 1 THRU 5 AND LOT NO. 8
 EAST SIDE COMMERCIAL PARK
 14.46 ACRES
 OUT OF THE
 JOHN HAMILTON SURVEY NO. 1
 ABSTRACT NO. 405
 CITY OF BURNET