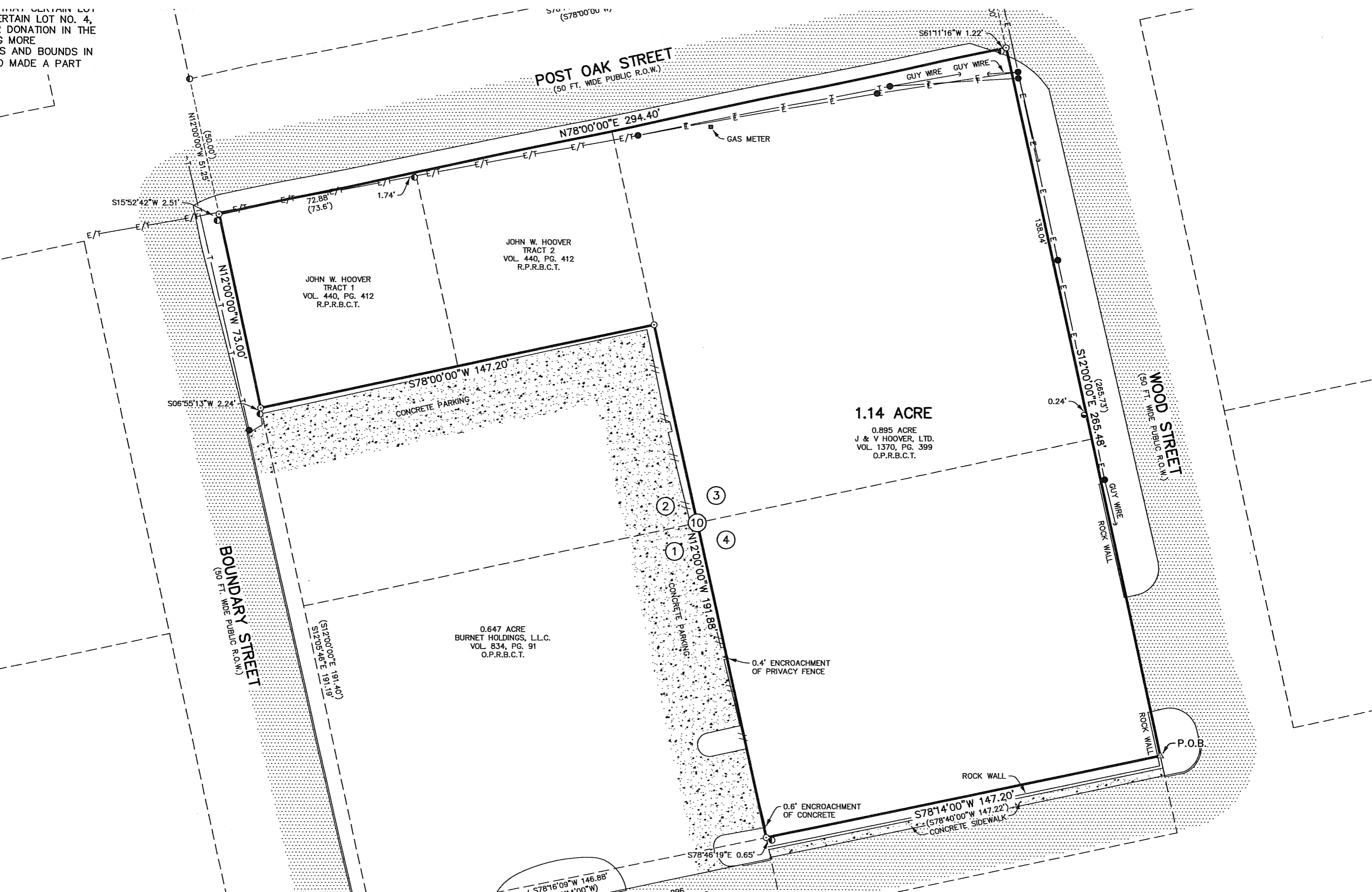


...CERTAIN LOT  
...DONATION IN THE  
...MORE  
...S AND BOUNDS IN  
...MADE A PART



POST OAK STREET  
(50 FT. WIDE PUBLIC R.O.W.)

WOOD STREET  
(50 FT. WIDE PUBLIC R.O.W.)

BOUNDARY STREET  
(50 FT. WIDE PUBLIC R.O.W.)

JOHN W. HOOVER  
TRACT 1  
VOL. 440, PG. 412  
R.P.R.B.C.T.

JOHN W. HOOVER  
TRACT 2  
VOL. 440, PG. 412  
R.P.R.B.C.T.

1.14 ACRE  
0.895 ACRE  
J & V HOOVER, LTD.  
VOL. 1370, PG. 399  
O.P.R.B.C.T.

0.647 ACRE  
BURNET HOLDINGS, L.L.C.  
VOL. 834, PG. 91  
O.P.R.B.C.T.

CONCRETE PARKING

CONCRETE PARKING

0.4' ENCROACHMENT  
OF PRIVACY FENCE

0.6' ENCROACHMENT  
OF CONCRETE

CONCRETE SIDEWALK

P.O.B.

ROCK WALL

ROCK WALL

S78°00'00"W  
(S78°00'00"W)

S61°11'16"W 1.22'

N78°00'00"E 294.40'

N12°00'00"W 51.25'

S15°52'42"W 2.51'

N12°00'00"W 73.00'

S06°55'13"W 2.24'

S78°00'00"W 147.20'

N12°00'00"W 191.88'

S12°00'00"E 265.48'

S12°00'00"E 191.40'

S12°05'46"E 191.19'

S78°16'09"W 146.88'

296