

**REQUEST FOR PROPOSAL FOR LANDSCAPING**  
**City of Burnet, Texas**

The City of Burnet is requesting the submittal of design proposals for landscaping at Haley Nelson Park in Burnet, Texas.

Submittals shall include a plan for landscaping in three major areas of the park; the park entrance sign, the amphitheatre and the pavilion, with the major focus on the park sign. (See the attached aerial indicating the general locations.) Landscaping shall include xeriscaping with low-maintenance, drought-tolerant and deer resistant plants. Other design elements shall include, but not be limited to, stone or rock accents, landscape fabric, and top dressing. Submitter should understand that this is a community park and as such, all plant selections shall be visitor friendly. No plants with thorns or sharp edges or those that are potentially hazardous to humans or animals shall be used. The City shall provide water to the landscaping locations but submitter shall include all irrigation components within the planting beds as well as battery operated, digital irrigation timers to irrigate as required for the chosen vegetation. Irrigation system shall have ¾" connections for connection to City lines.

Cost estimate for completion of the project shall not exceed \$10,000 which shall include all labor and materials to complete the submitted design. This is a firm not-to-exceed amount and no contingency will be added. Submitter shall specify the estimated cost of their plan in the submittal. Cost for quality of service shall be a contributing factor in the selection of the plan to be used.

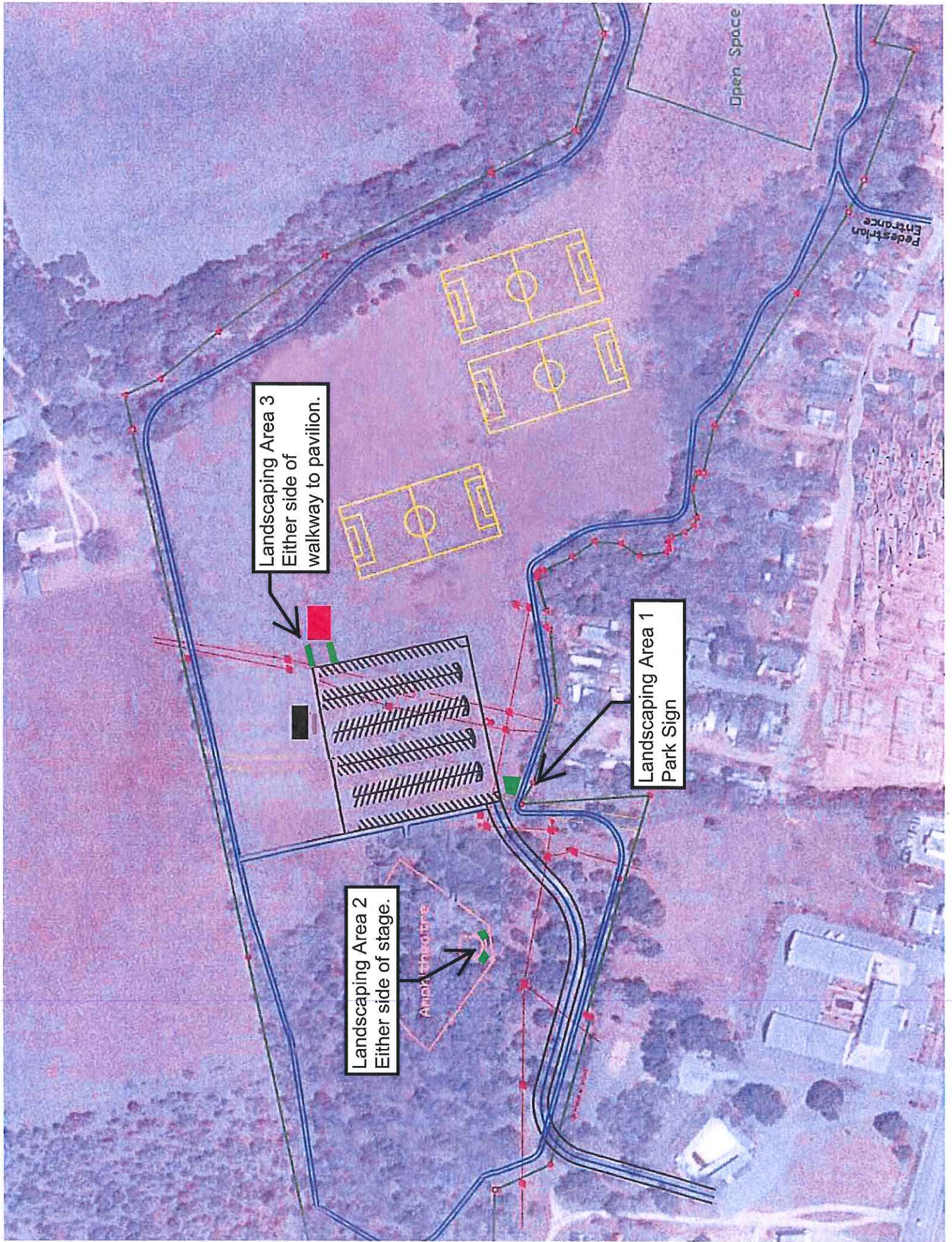
Submittal shall include a timeline indicating appropriate planting dates for all plants selected in the plan. Submittal may include landscaping for additional areas as recommended by the submitter. All work must be completed by December 31, 2011.

Upon consideration of the proposals, the City of Burnet reserves the right to accept or reject any and /or all proposals. Proposals will be evaluated based on the plan that provides the best value for the City with such determination being made by the City.

Plan shall be submitted to the attention of Crista Bromley, City of Burnet, 1001 Buchanan Drive, Suite 4, Burnet, TX 78611 (P.O. Box 1369) no later than 10 a.m. on October 4, 2011. Submittals received after this time may not be considered. To schedule a site tour contact Crista Bromley at (512) 715-3217 or email ([cbromley@cityofburnet.com](mailto:cbromley@cityofburnet.com)).

Submittal Check List

- Layout Plan for each proposed area
- Time Line
- Description of plants selected if not identified on the plan
- Proposed cost of the design



Open Space

Pedestrian Entrance

Landscaping Area 3  
Either side of  
walkway to pavilion.

Landscaping Area 1  
Park Sign

Landscaping Area 2  
Either side of stage.

Amphitheatre

