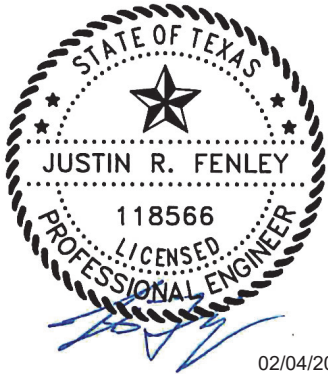
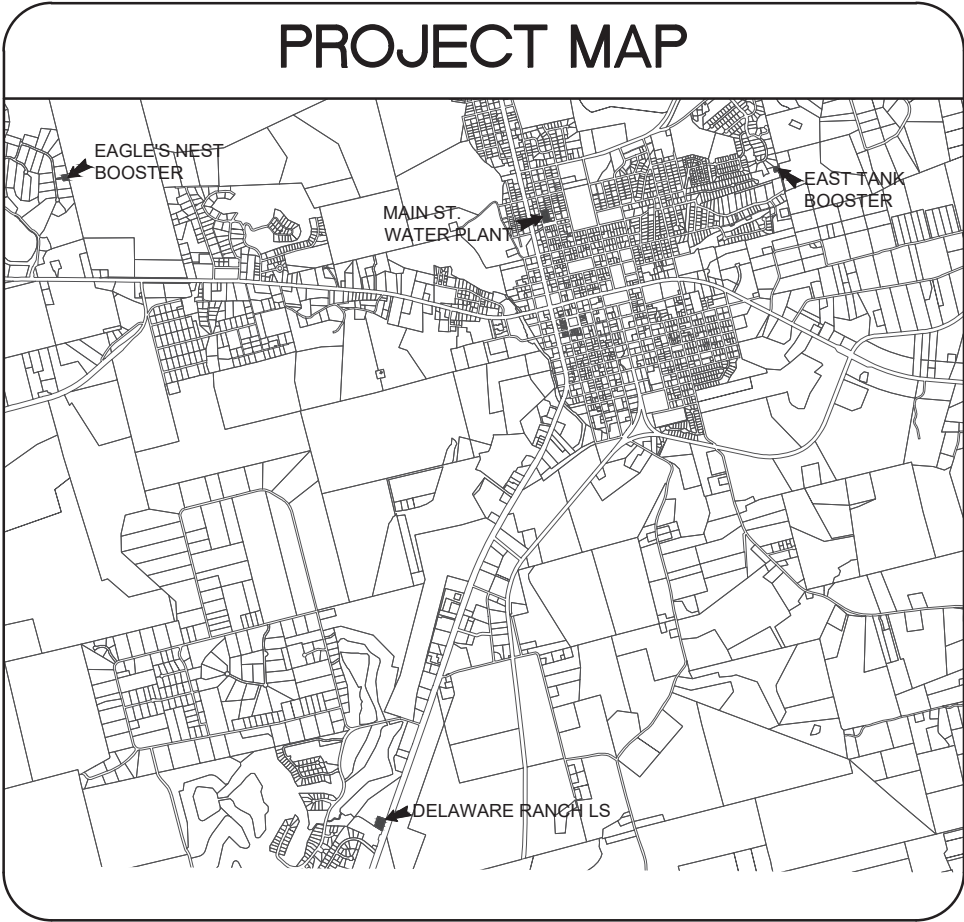


CONSTRUCTION PLANS
FOR
CITY OF BURNET GENERATORS
CITY OF BURNET
BURNET, TEXAS
PID: CIPWT - 2025A

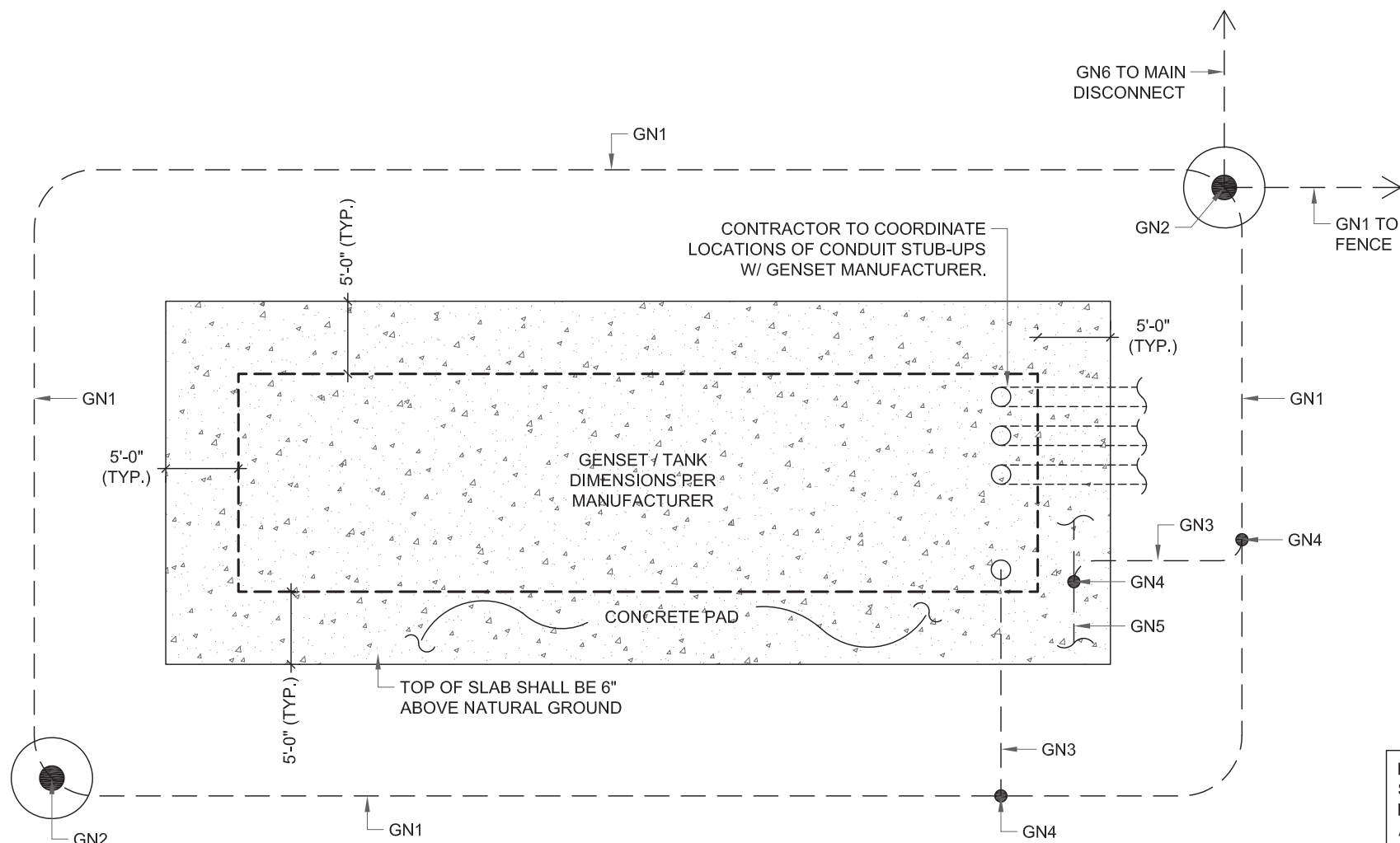
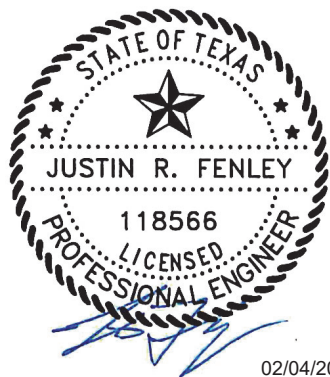


DRAWING INDEX	
NO.	TITLE
TS	TITLE SHEET
E1	ELECTRICAL NOTES & DETAILS
E2	GENERATOR SLAB DETAIL
E3	SECURITY FENCE DETAILS
E4	DELAWARE RANCH LS
E5	EAGLE'S NEST BOOSTER
E6	EAST TANK BOOSTER
E7	MAIN ST. WATER PLANT

ARCHITECTURE - ENGINEERING - INTERIORS
LANDSCAPE - SURVEYING

1809 S. CHESTNUT ST. STE. 202 - LUFKIN, TEXAS 75901 - (936) 637-4900
4077 CROSS PARK DR. STE. 100 - BRYAN, TEXAS 77802 - (979) 776-9700
455 RICE ROAD STE. 107 - TYLER, TEXAS 75701 - (903) 581-3805

DATE 2/4/26	DRAWN BY: JRF	APPVD BY: JRF	SCALE N.T.S.	JOB NUMBER 613020
City of Burnet Generators City of Burnet Burnet, TX Title Sheet				SHEET NO. TS
©2025 ALL RIGHTS RESERVED BY GOODWIN-LASITER, INC. UNAUTHORIZED USE OR REPRODUCTION IS PROHIBITED WITHOUT WRITTEN CONSENT FROM GOODWIN-LASITER, INC.				
TBPE FIRM REGISTRATION #413 - TBPLS FIRM REGISTRATION #10110900 - TBPLS FIRM REGISTRATION #10110901				

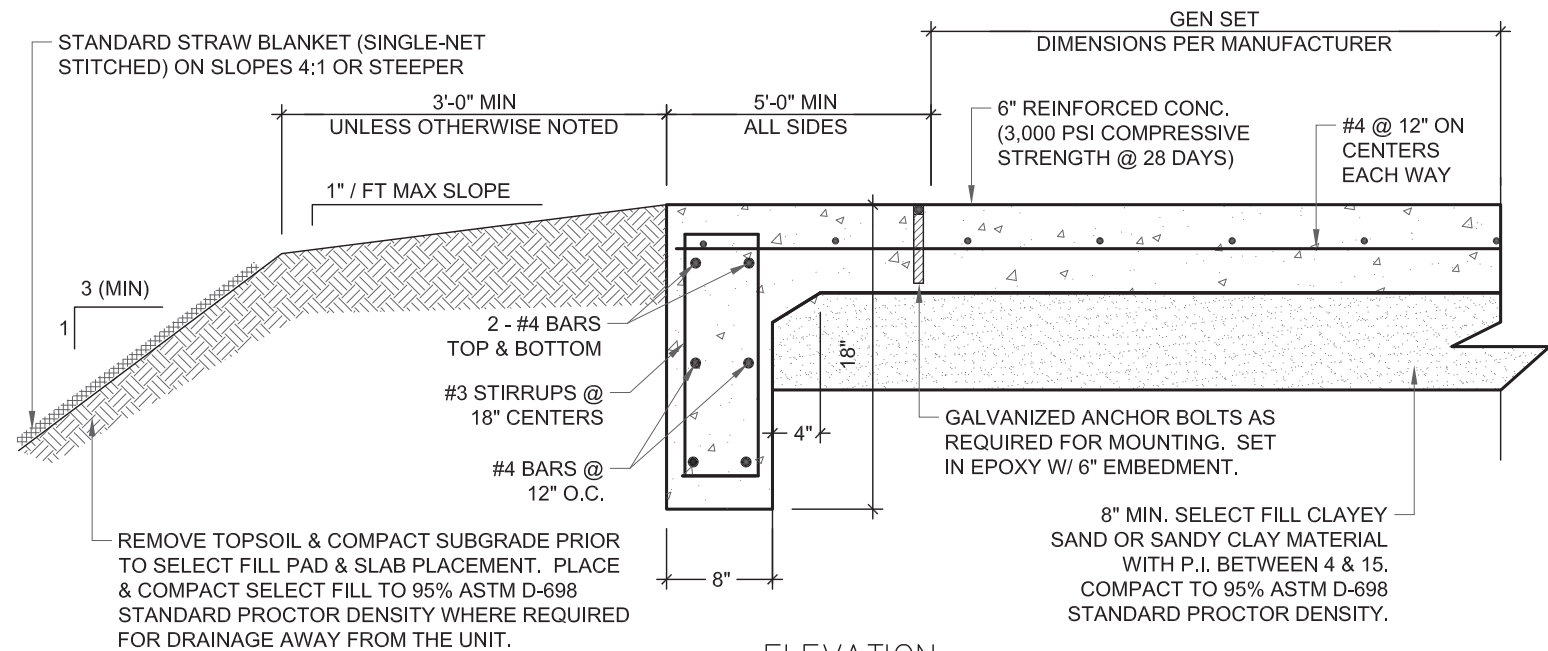


PLAN

NOTE: VERIFY SLAB ELEVATION WITH SITE PLAN AND ADJUST FOOTING DEPTH. PROVIDE POSITIVE DRAINAGE AWAY FROM SLAB IN ALL DIRECTIONS.

NOTE: ALL CONDUITS SHALL BE INSTALLED THROUGH CONCRETE PAD. CONDUIT RUNS ON TOP OF CONCRETE PAD SHALL BE UNACCEPTABLE.

ELEVATION OF GENERATOR SLAB SHALL MATCH EXISTING LIFT STATION SLAB.



ELEVATION

- NOTES:
- CONTRACTOR TO COORDINATE WITH GENERATOR MANUFACTURER FOR LOCATIONS OF CONDUIT, ANCHORING, AND SUPPORT SLAB DIMENSIONS.
 - ALL CONCRETE WORK SHALL BE IN CONFORMANCE WITH THE MOST RECENT EDITION OF THE ACI 318 "BUILDING CODE REQUIREMENTS FOR REINFORCED CONCRETE".



1609 S. CHESTNUT ST. STE. 202 LUFKIN, TEXAS 75901 (936) 697-4800
4077 CROSS PARK DR. STE. 100 BRYAN, TEXAS 77802 (979) 776-9700
455 RICE ROAD STE. 107 TYLER, TEXAS 75703 (903) 581-3805

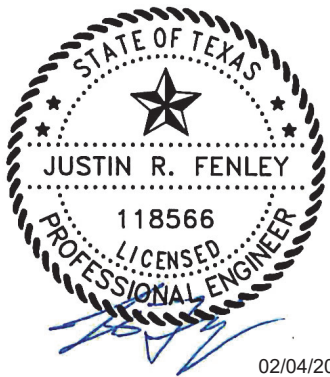
City of Burnet Generators
City of Burnet
Burnet, TX
Generator Slab Detail

DATE: 01/27/26
DRAWN BY: JRF
APPROVED BY: JRF
ISSUED: 01/27/26

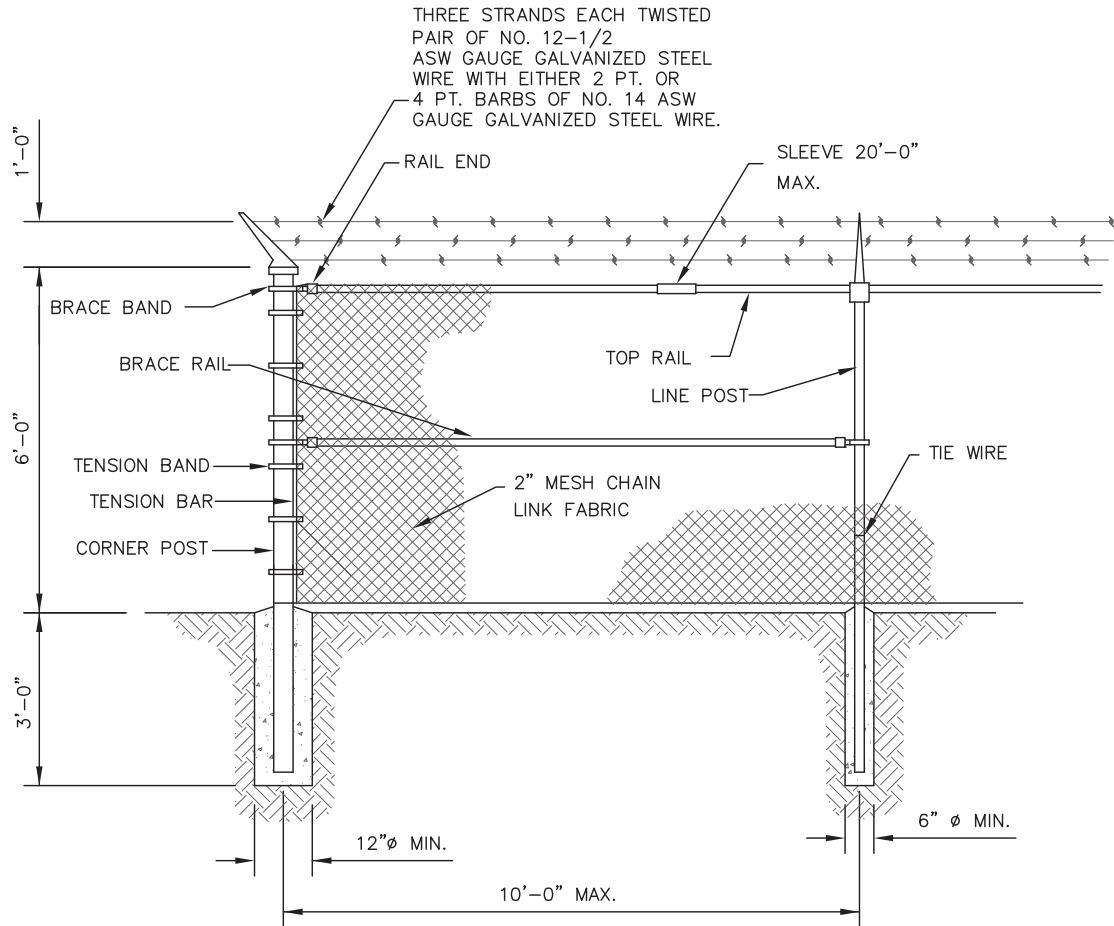
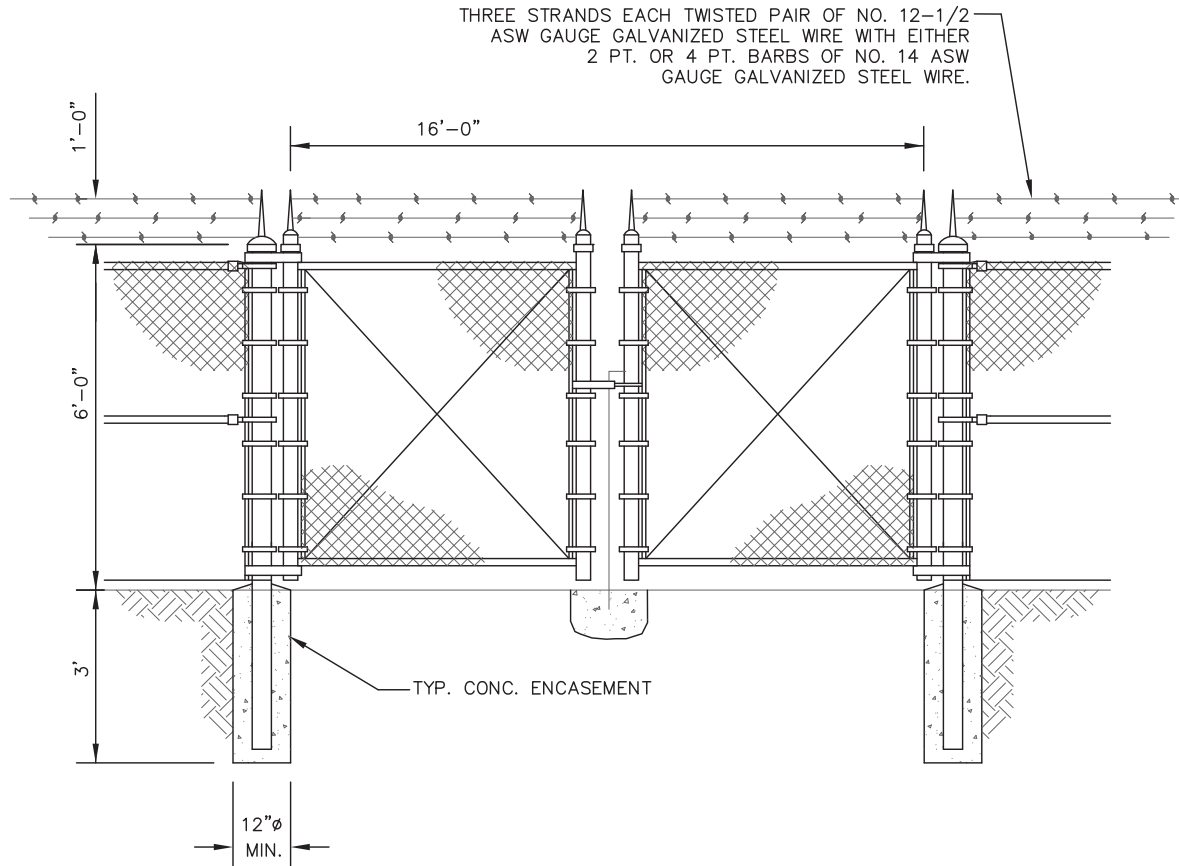
JOB NUMBER

613020

SHEET NO.
E2



02/04/2026



1609 S. CHESTNUT ST. STE. 202 - LUFKIN, TEXAS 75901 - (936) 637-4800
4077 CROSS PARK DR. STE. 100 - BRYAN, TEXAS 77802 - (979) 776-9700
4555 RICE ROAD STE. 107 - TYLER, TEXAS 75703 - (903) 561-3805

City of Burnet Generators
City of Burnet
Burnet, TX
Security Fence Details

DATE: 01/27/26
DRAWN BY: JRF
APPROVED BY: JRF
ISSUED: 01/27/26

JOB NUMBER
613020

SHEET NO.

E3

Fence Gate Detail

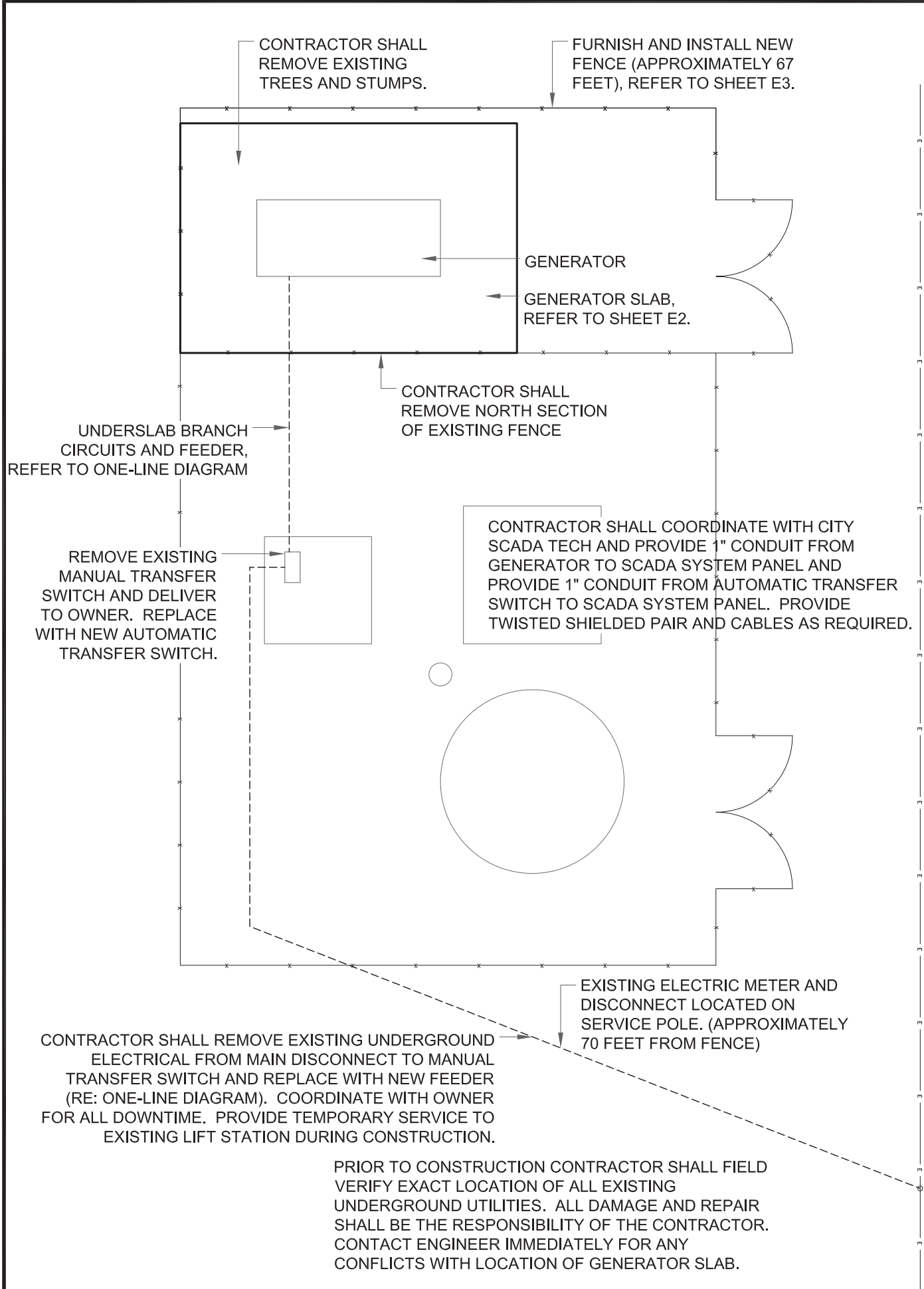
N.T.S.

2

Security Fence Detail

N.T.S.

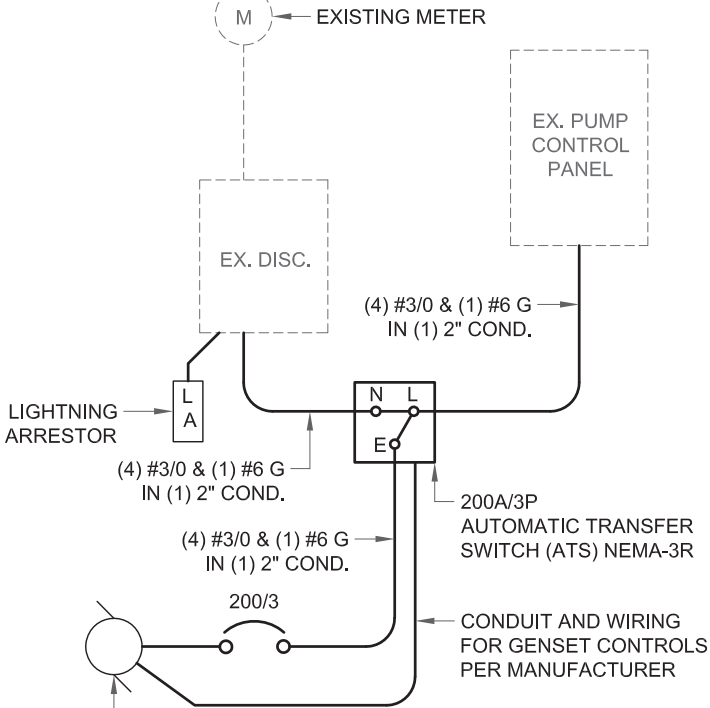
1



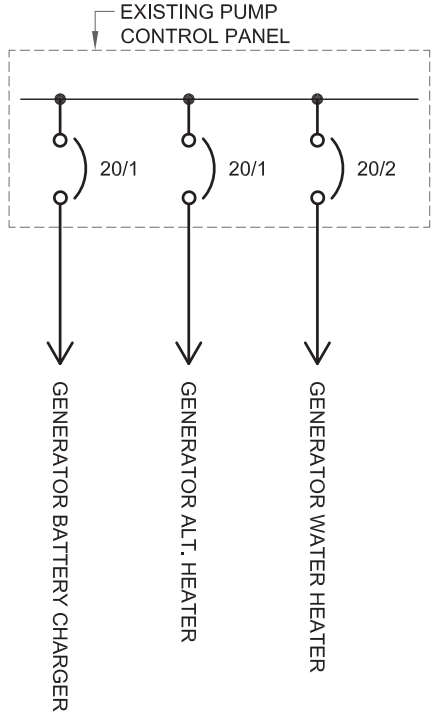
- NOTE 1) LA - LIGHTNING ARRESTOR; COOPER POWER SYSTEMS "STORM TRAPPER" (903-759-0875) OR APPROVED EQUIVALENT
- NOTE 2) MAIN LINE CIRCUIT BREAKER SHALL BE PROVIDED WITH GENSET. PROVIDE ONE OR MORE BREAKERS ON GENSET AS NECESSARY TO MEET U.L. LISTING, TO PROVIDE KW & KVA STATED ABOVE AT 36% MAX. VOLTAGE DROP, & TO ALLOW CONNECTION OF EXISTING EQUIPMENT SHOWN.
- NOTE 3) PROVIDE SOLID INTER-CONNECT BETWEEN GENERATOR NEUTRAL AND SERVICE SUPPLIED SYSTEM NEUTRAL.
- NOTE 4) PROVIDE SOUND ATTENUATED ENCLOSURE FOR GENSET RATED FOR 72 dBA @ 23 FEET.
- NOTE 5) PROVIDE GROUNDING PER N.E.C.

175 KW, 150 SKVA DIESEL GENERATOR, SUB-BASE FUEL TANK SIZED FOR 48 HR MIN RUN TIME, NFPA 110: CLASS 48, TYPE 10, LEVEL 2 WITH WEATHER PROTECTIVE & SOUND ATTENUATED ENCLOSURE & CRITICAL RATED EXHAUST SILENCER. (74dB @ 100 FT)

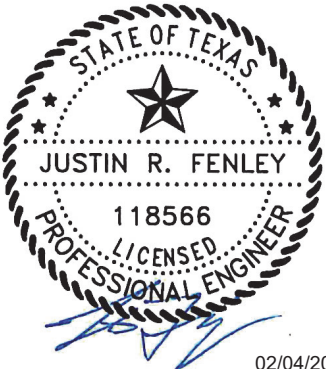
EXISTING 480V, 3-PHASE, ELECTRICAL SERVICE. COORDINATE WITH ELECTRICAL DELIVERY PROVIDER AND PROVIDE AS REQUIRED FOR CHANGING TO 480Y277V, 3-PHASE, 4-WIRE.



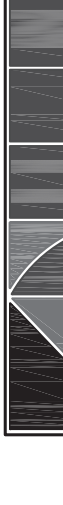
NOTE: CONTRACTOR SHALL PROVIDE A SIGN ON EX. DISC. INDICATING TYPE AND LOCATION OF ON-SITE EMERGENCY POWER SOURCE AS PER NEC 700.7.

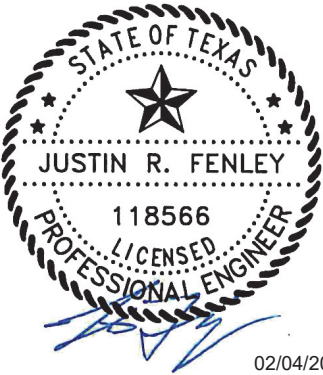
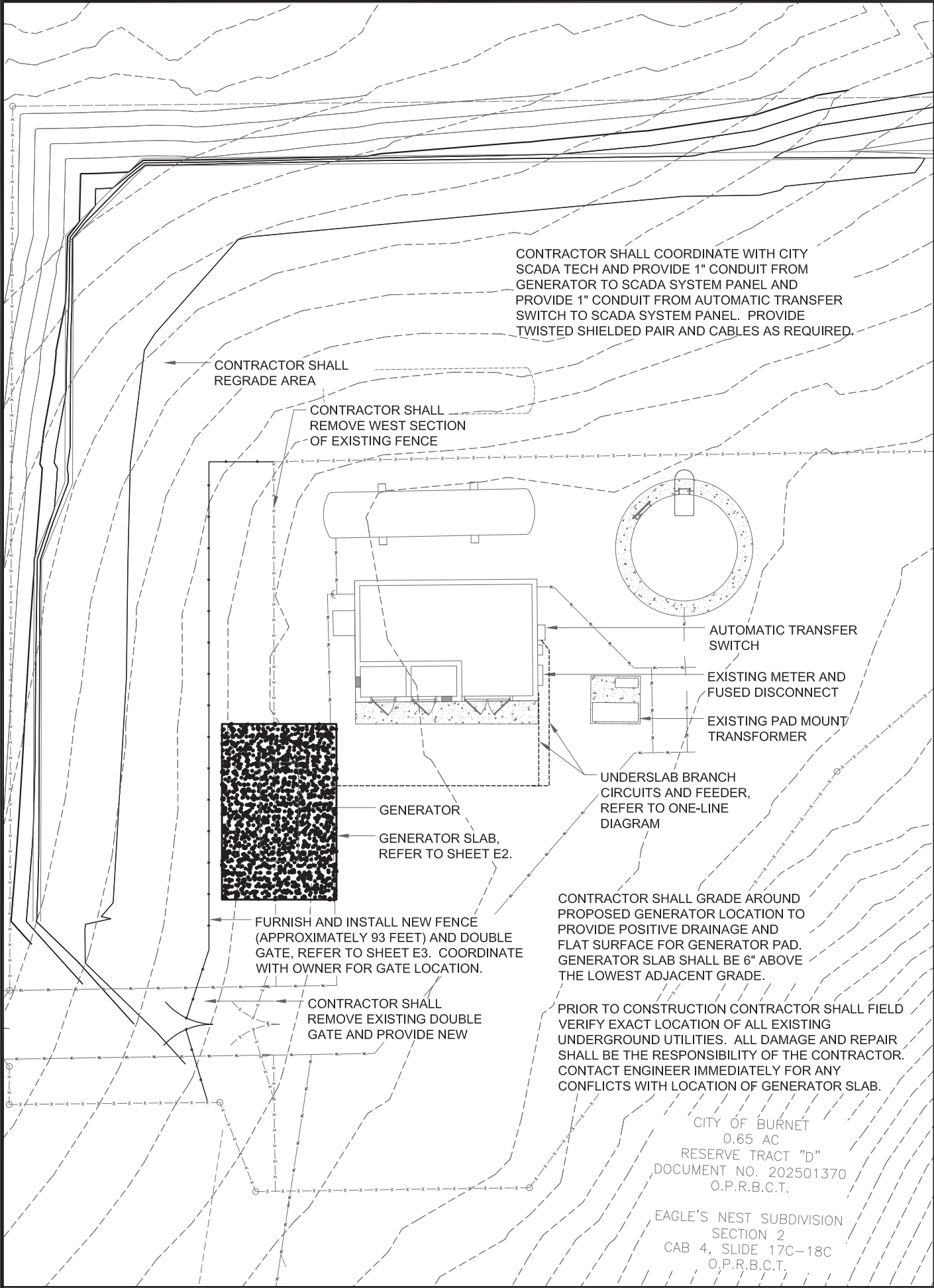


NOTE: UNLESS OTHERWISE NOTED ALL 20 AMP SINGLE AND TWO POLE BRANCH CIRCUITS SHALL CONSIST OF (3) #12 IN (1) 1/2" CONDUIT



02/04/2026

E4		SHEET NO.		JOB NUMBER 613020	
City of Burnet Generators City of Burnet Burnet, TX Delaware Ranch LS		DATE: 01/27/26		DRAWN BY: JRF	
		APPROV BY: JRF		ISSUED: 01/27/26	
		<p>ARCHITECTURE • ENGINEERING • INTERIORS LANDSCAPE • SURVEYING</p> <p>1809 S. CHESTNUT ST. STE. 202 • LURKIN, TEXAS 75901 • (936) 637-4900 10000 W. WILSON ST. STE. 100 • DALLAS, TEXAS 75243 • (972) 382-0000 455 FICE ROAD STE. 107 • TYLER, TEXAS 75709 • (936) 581-5808</p>			
NO.		DATE		REVISIONS	
T.B.P.E.L.S. FIRM NO. F-413		T.B.P.E.L.S. FIRM NO. 10110900			
T.B.A.E. FIRM NO. BR 351		T.B.P.E.L.S. FIRM NO. 10110901			
2025 ALL RIGHTS RESERVED BY GOODWIN-LASTER, INC. UNAUTHORIZED USE OR REPRODUCTION IS PROHIBITED WITHOUT WRITTEN CONSENT FROM GOODWIN-LASTER, INC.					
D:\613613020\CD\MEP\613020-E4.DWG					

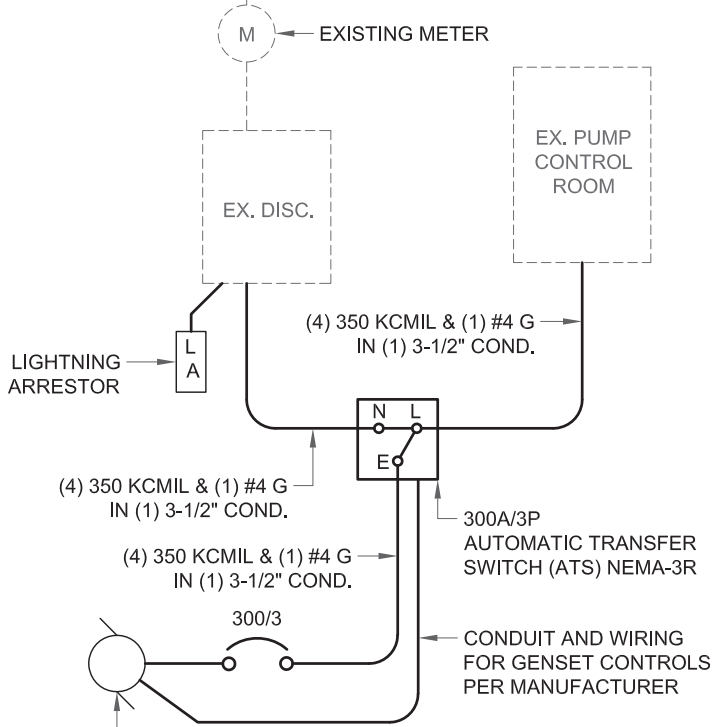


- NOTE 1) LA - LIGHTNING ARRESTOR; COOPER POWER SYSTEMS "STORM TRAPPER" (903-759-0875) OR APPROVED EQUIVALENT
- NOTE 2) MAIN LINE CIRCUIT BREAKER SHALL BE PROVIDED WITH GENSET. PROVIDE ONE OR MORE BREAKERS ON GENSET AS NECESSARY TO MEET U.L. LISTING, TO PROVIDE KW & KVA STATED ABOVE AT 36% MAX. VOLTAGE DROP, & TO ALLOW CONNECTION OF EXISTING EQUIPMENT SHOWN.
- NOTE 3) PROVIDE SOLID INTER-CONNECT BETWEEN GENERATOR NEUTRAL AND SERVICE SUPPLIED SYSTEM NEUTRAL.
- NOTE 4) PROVIDE SOUND ATTENUATED ENCLOSURE FOR GENSET RATED FOR 72 dBA @ 23 FEET.
- NOTE 5) PROVIDE GROUNDING PER N.E.C.

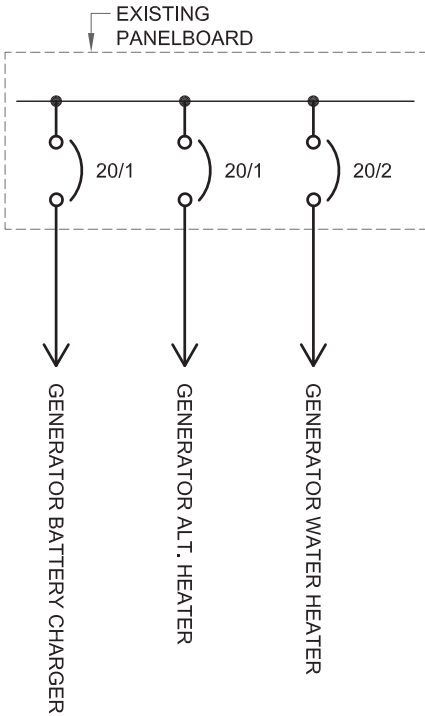
200 KW, 250 SKVA DIESEL GENERATOR, SUB-BASE FUEL TANK SIZED FOR 48 HR MIN RUN TIME, NFPA 110: CLASS 48, TYPE 10, LEVEL 2 WITH WEATHER PROTECTIVE & SOUND ATTENUATED ENCLOSURE & CRITICAL RATED EXHAUST SILENCER. (74dB @ 100 FT)


NOTE: UNLESS OTHERWISE NOTED ALL 20 AMP SINGLE AND TWO POLE BRANCH CIRCUITS SHALL CONSIST OF (3) #12 IN (1) 1/2" CONDUIT

EXISTING 480Y277V, 3-PHASE, ELECTRICAL SERVICE. COORDINATE WITH ELECTRICAL DELIVERY PROVIDER AND PROVIDE AS REQUIRED.



NOTE: CONTRACTOR SHALL PROVIDE A SIGN ON EX. DISC. INDICATING TYPE AND LOCATION OF ON-SITE EMERGENCY POWER SOURCE AS PER NEC 700.7.



<div>City of Burnet Generators</div> <div>City of Burnet</div> <div>Burnet, TX</div> <div>Eagle's Nest Booster</div>				<div>DATE: 01/27/26</div> <div>DRAWN BY: JRF</div> <div>APPROV BY: JRF</div> <div>ISSUED: 01/27/26</div>	
<div>JOB NUMBER</div> <div>613020</div> <div>SHEET NO.</div> <div>E5</div>					
<div></div>			<div>ARCHITECTURE • ENGINEERING • INTERIORS</div> <div>LANDSCAPE • SURVEYING</div> <div>1609 S. CHESTNUT ST. STE. 202 • LUFKIN, TEXAS 75901 • (936) 637-4800</div> <div>4077 CROSS PARK DR. STE. 100 • BRYAN, TEXAS 77802 • (979) 776-9700</div> <div>455 RICE ROAD STE. 107 • TYLER, TEXAS 75703 • (903) 581-3805</div>		
NO.		DATE		REVISIONS	
T.B.P.E.L.S. FIRM NO. F-413		T.B.P.E.L.S. FIRM NO. 10110900			
T.B.P.E. FIRM NO. BR 351		T.B.P.E.L.S. FIRM NO. 10110901			
2025 ALL RIGHTS RESERVED BY GOODWIN-LASTER, INC. UNAUTHORIZED USE OR REPRODUCTION IS PROHIBITED WITHOUT WRITTEN CONSENT FROM GOODWIN-LASTER, INC.					
D:\613020\CDMEP613020-E5.DWG					

Eagle's Nest Booster Site Plan

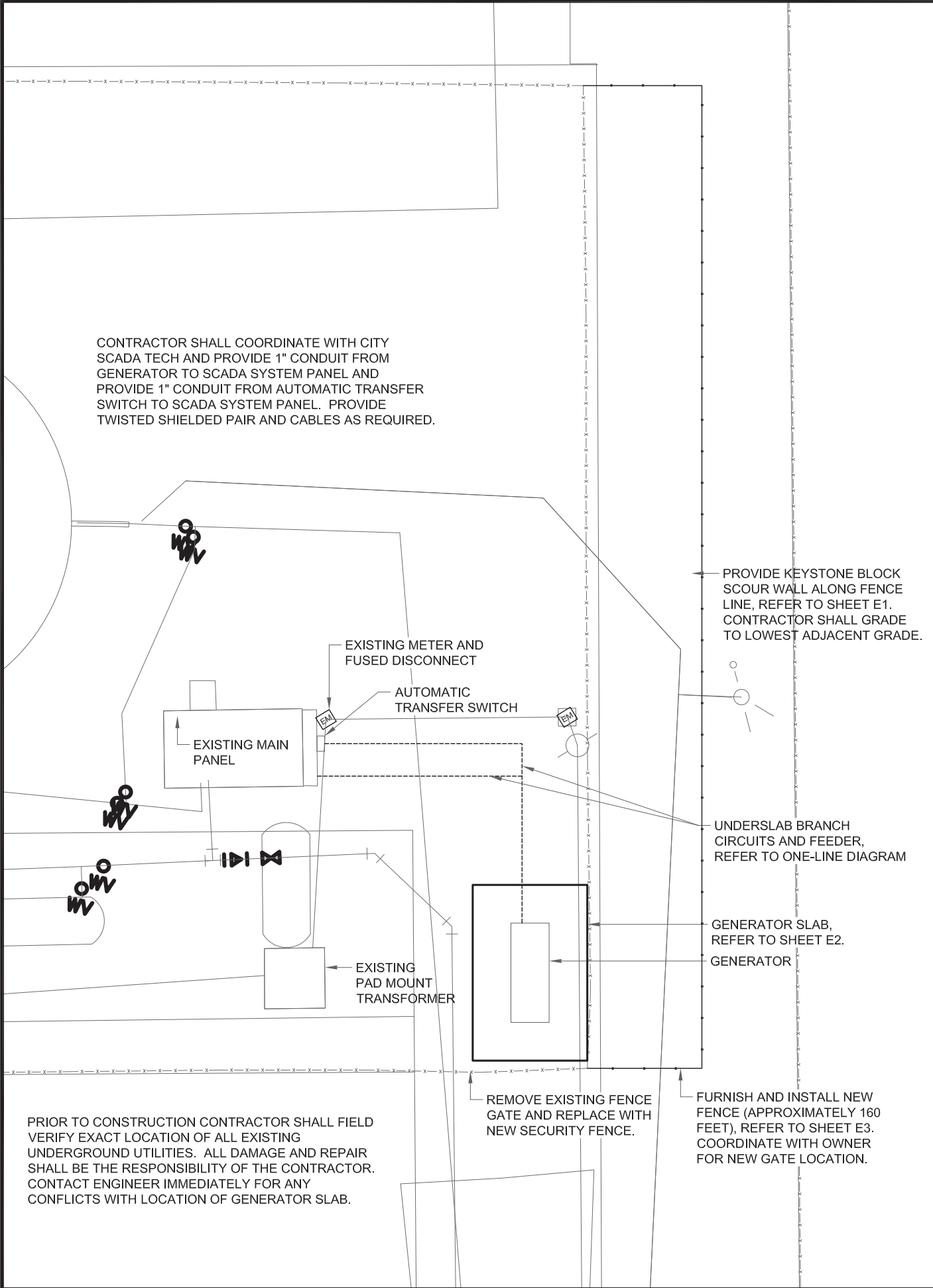
1" = 20'

2

One-Line Diagram

N.T.S.

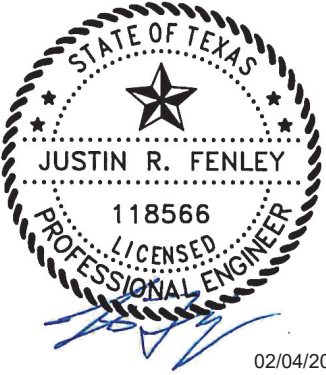
1



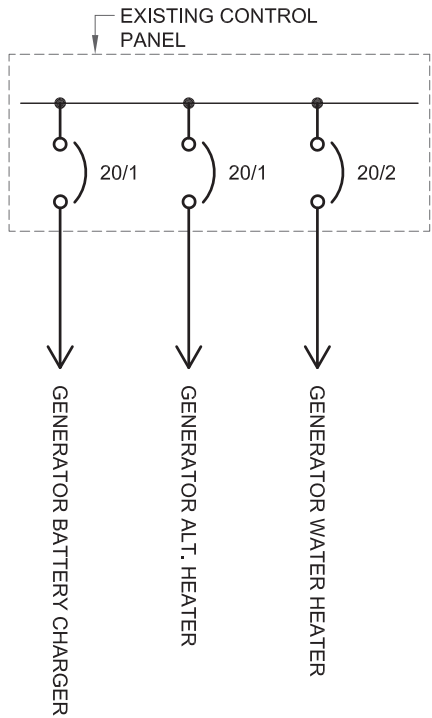
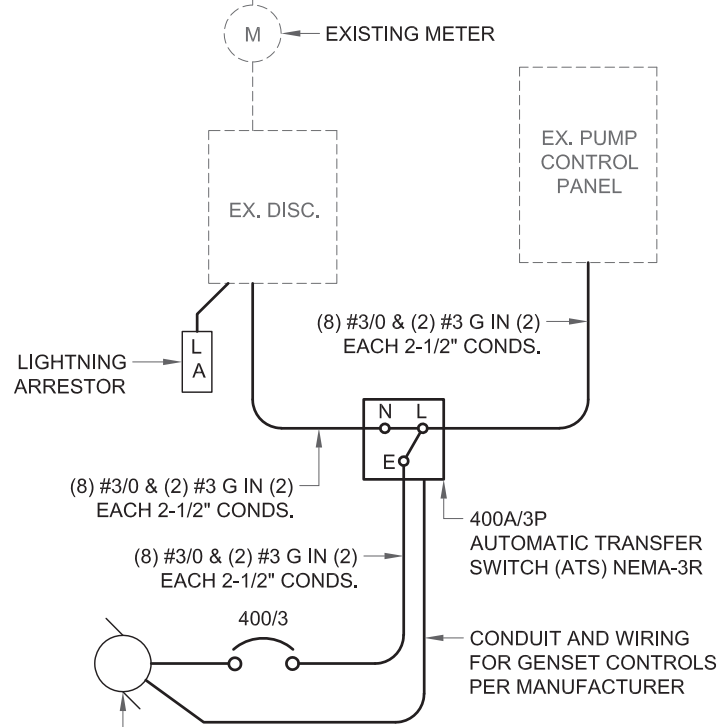
- NOTE 1) LA - LIGHTNING ARRESTOR; COOPER POWER SYSTEMS "STORM TRAPPER" (903-759-0875) OR APPROVED EQUIVALENT
- NOTE 2) MAIN LINE CIRCUIT BREAKER SHALL BE PROVIDED WITH GENSET. PROVIDE ONE OR MORE BREAKERS ON GENSET AS NECESSARY TO MEET U.L. LISTING, TO PROVIDE KW & KVA STATED ABOVE AT 36% MAX. VOLTAGE DROP, & TO ALLOW CONNECTION OF EXISTING EQUIPMENT SHOWN.
- NOTE 3) PROVIDE SOLID INTER-CONNECT BETWEEN GENERATOR NEUTRAL AND SERVICE SUPPLIED SYSTEM NEUTRAL.
- NOTE 4) PROVIDE SOUND ATTENUATED ENCLOSURE FOR GENSET RATED FOR 72 dBA @ 23 FEET.
- NOTE 5) PROVIDE GROUNDING PER N.E.C.

250 KW, 250 SKVA DIESEL GENERATOR, SUB-BASE FUEL TANK SIZED FOR 48 HR MIN RUN TIME, NFPA 110: CLASS 48, TYPE 10, LEVEL 2, WITH WEATHER PROTECTIVE & SOUND ATTENUATED ENCLOSURE & CRITICAL RATED EXHAUST SILENCER. (74dB @ 100 FT)

NOTE: UNLESS OTHERWISE NOTED ALL 20 AMP SINGLE AND TWO POLE BRANCH CIRCUITS SHALL CONSIST OF (3) #12 IN (1) 1/2" CONDUIT



EXISTING 480Y277V, 3-PHASE, ELECTRICAL SERVICE. COORDINATE WITH ELECTRICAL DELIVERY PROVIDER AND PROVIDE AS REQUIRED.



East Tank Booster

1" = 20'


2

One-Line Diagram

N.T.S.

1

City of Burnet Generators City of Burnet Burnet, TX East Tank Booster			JOB NUMBER 613020		E6	
DATE: 01/27/26		DRAWN BY: JRF	APPROV BY: JRF			SHEET NO.
ISSUED: 01/27/26						

		ARCHITECTURE • ENGINEERING • INTERIORS LANDSCAPE • SURVEYING	
1809 S. CHESTNUT ST. STE. 202 • LUFKIN, TEXAS 75901 • (936) 637-4900 4077 CROSS PARK DR. STE. 100 • BRYAN, TEXAS 77802 • (979) 776-9700 455 RICE ROAD STE. 107 • TYLER, TEXAS 75703 • (903) 581-3805			

T.B.P.E.L.S. FIRM NO. F-413		T.B.P.E.L.S. FIRM NO. 10110900	
T.B.A.E. FIRM NO. BR 351		T.B.P.E.L.S. FIRM NO. 10110901	
2025 ALL RIGHTS RESERVED BY GOODWIN-LASTER, INC. UNAUTHORIZED USE OR REPRODUCTION IS PROHIBITED WITHOUT WRITTEN CONSENT FROM GOODWIN-LASTER, INC.			
NO.		DATE	
REVISIONS			

D:\613613020\CDMEP613020-E6.DWG	
---------------------------------	--

