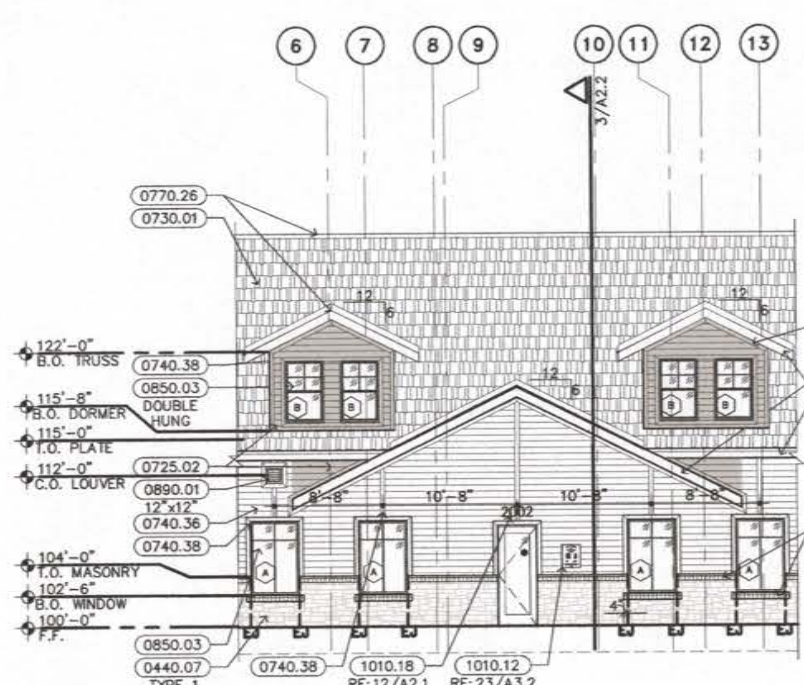
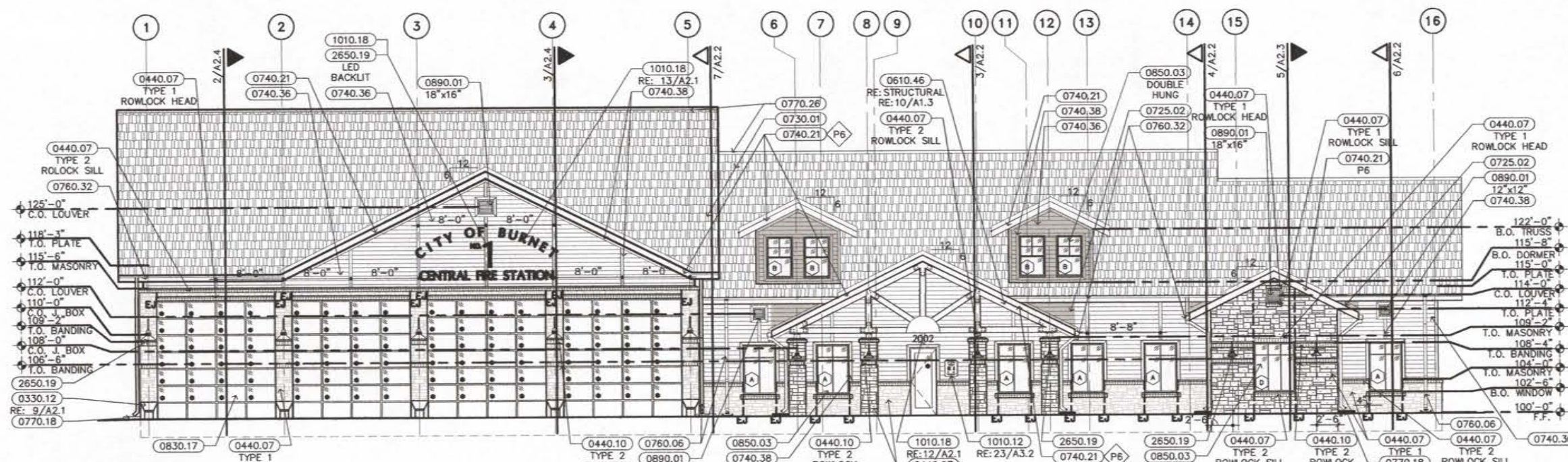


KEYNOTES

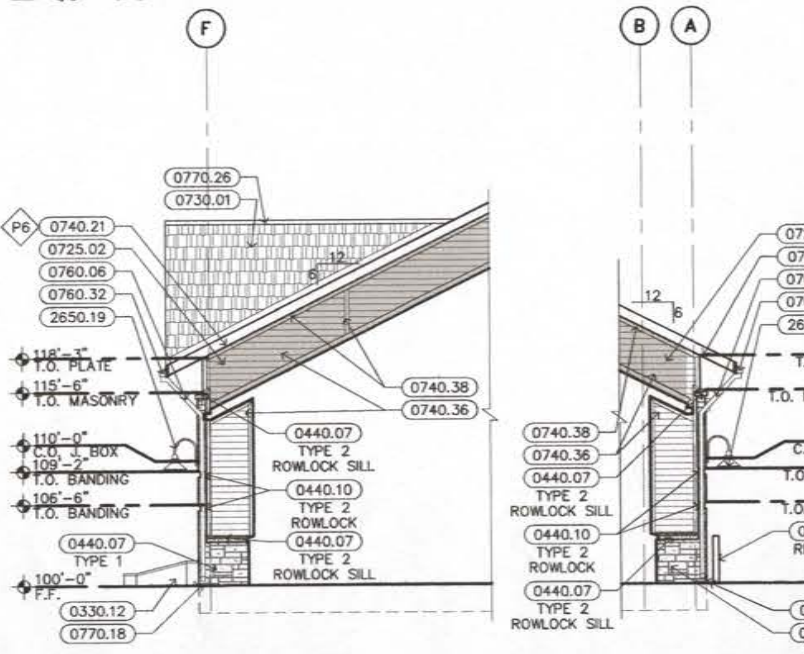
- DIVISION 03 - CONCRETE**
 - 0320.01 DOWEL INTO CONCRETE SLAB
 - 0320.02 STEEL REINFORCING (RE: STRUCTURAL)
 - 0330.05 CONCRETE GRADE BEAM (RE: STRUCTURAL)
 - 0330.12 CONCRETE BOLLARD
- DIVISION 04 - MASONRY**
 - 0440.07 STONE VENEER
 - 0440.10 STONE BANDING
- DIVISION 05 - METALS**
 - 0550.62 6" PIPE BOLLARD, FILL WITH CONCRETE
- DIVISION 06 - WOOD, PLASTICS, & COMPOSITES**
 - 0610.46 HEAVY TIMBER WOOD TRUSS
- DIVISION 07 - THERMAL & MOISTURE PROTECTION**
 - 0725.01 UNDERSLAB VAPOR BARRIER
 - 0725.02 SELF-ADHERING SHEET DAMPPROOFING
 - 0730.01 COMPOSITION SHINGLES
 - 0740.21 FIBER REINFORCED CEMENTITIOUS FASCIA
 - 0740.36 FIBER REINFORCED CEMENTITIOUS SIDING
 - 0740.38 1/4" FIBER REINFORCED CEMENTITIOUS TRIM
 - 0760.06 PREFINISHED METAL DOWNSPOUT (4" X 4")
 - 0760.32 6"x6" PREFINISHED METAL GUTTER
 - 0770.18 CONCRETE SPLASH BLOCK
 - 0770.26 RIDGE VENT
- DIVISION 08 - OPENINGS**
 - 0810.04 HOLLOW METAL DOOR AND FRAME
 - 0810.12 METAL LOUVER
 - 0810.20 FIBERGLASS-REINFORCED POLYMER DOOR
 - 0830.17 UPWARD-ACTING SECTIONAL DOOR
 - 0850.03 WOOD WINDOW WITH METAL CLAD EXTERIOR
 - 0850.01 PREFINISHED FIXED ALUMINUM LOUVER (WITH INSECT SCREEN)
 - 0890.05 CLOTHES DRYER VENT WITH FLAP
- DIVISION 10 - SPECIALTIES**
 - 1010.12 CAST BRONZE PLAQUE
 - 1010.18 METAL LETTERING
- DIVISION 23 - HEATING, VENTILATING, & AIR-CONDITIONING (HVAC) (RE: MECHANICAL)**
 - 2330.04 EXHAUST FAN
- DIVISION 26 - ELECTRICAL (RE: ELECTRICAL)**
 - 2650.19 EXTERIOR LIGHT FIXTURE
- DIVISION 31 - EARTHWORK**
 - 3120.02 COMPACTED SELECT FILL
- DIVISION 32 - EXTERIOR IMPROVEMENTS**
 - 3210.22 PAVING EXPANSION JOINT - FILL WITH JOINT SEALER 1/4" BELOW SURFACE



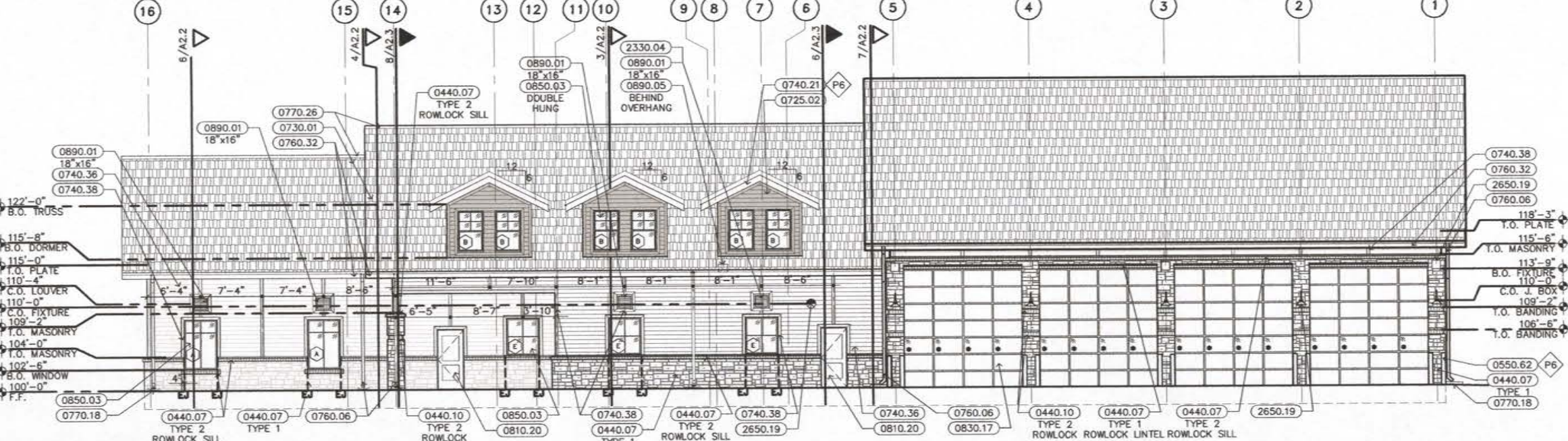
2 PARTIAL ELEVATION
1/8" = 1'-0"



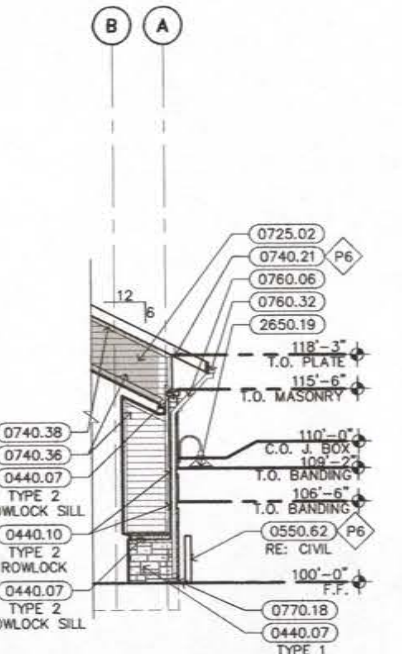
1 SOUTH ELEVATION
1/8" = 1'-0"



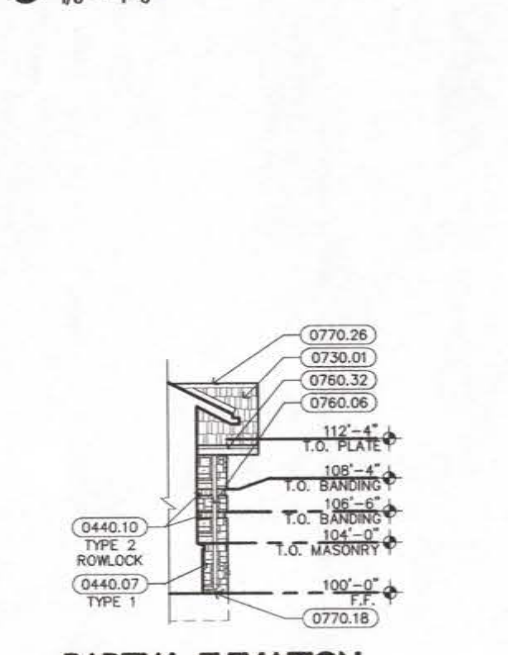
5 PARTIAL ELEVATION
1/8" = 1'-0"



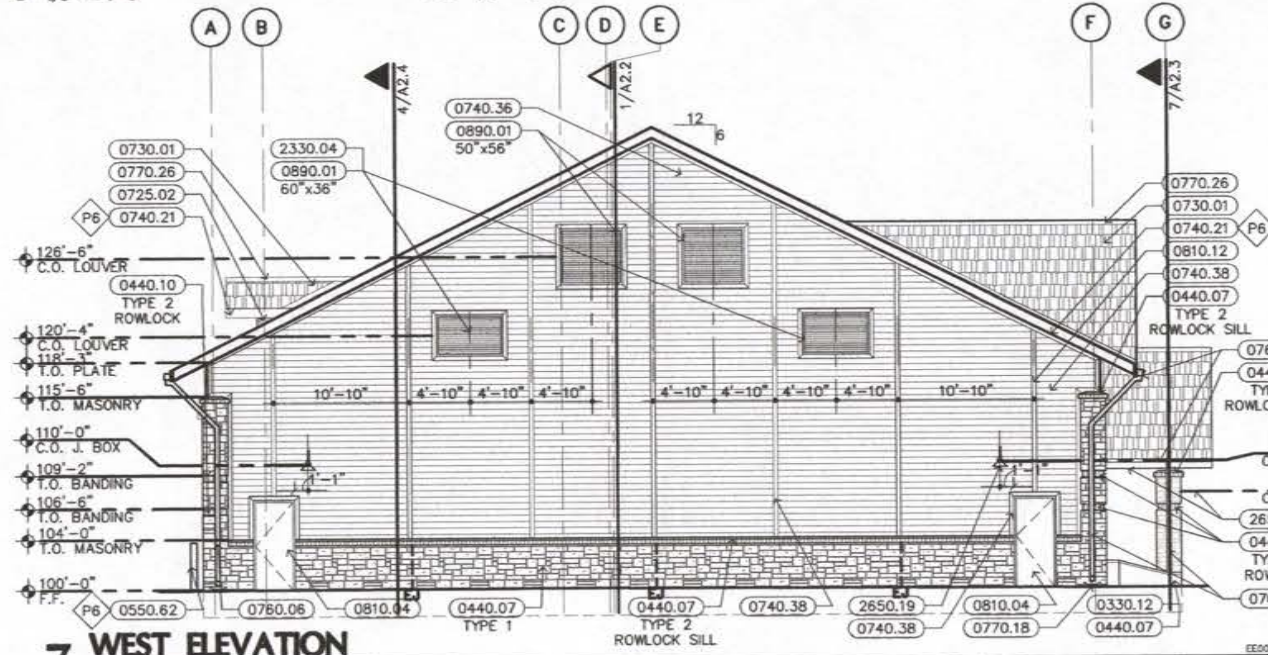
3 NORTH ELEVATION
1/8" = 1'-0"



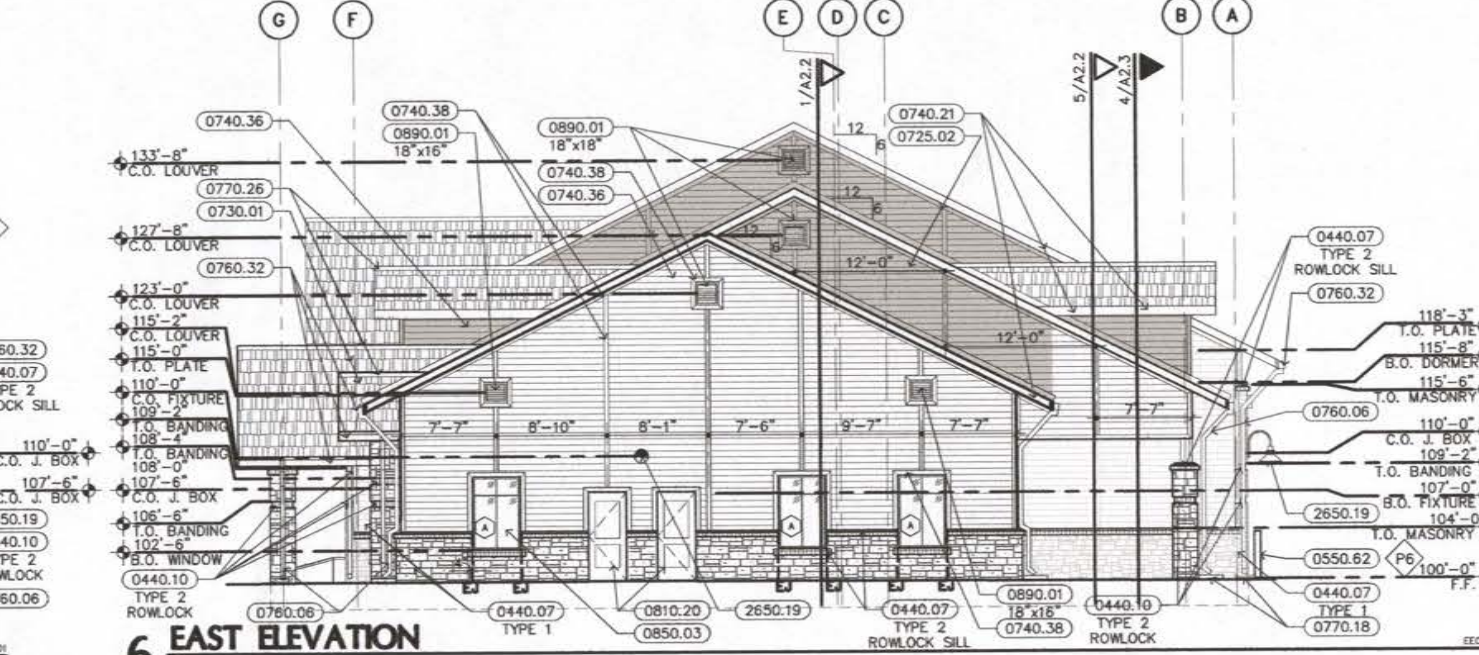
4 PARTIAL ELEVATION
1/8" = 1'-0"



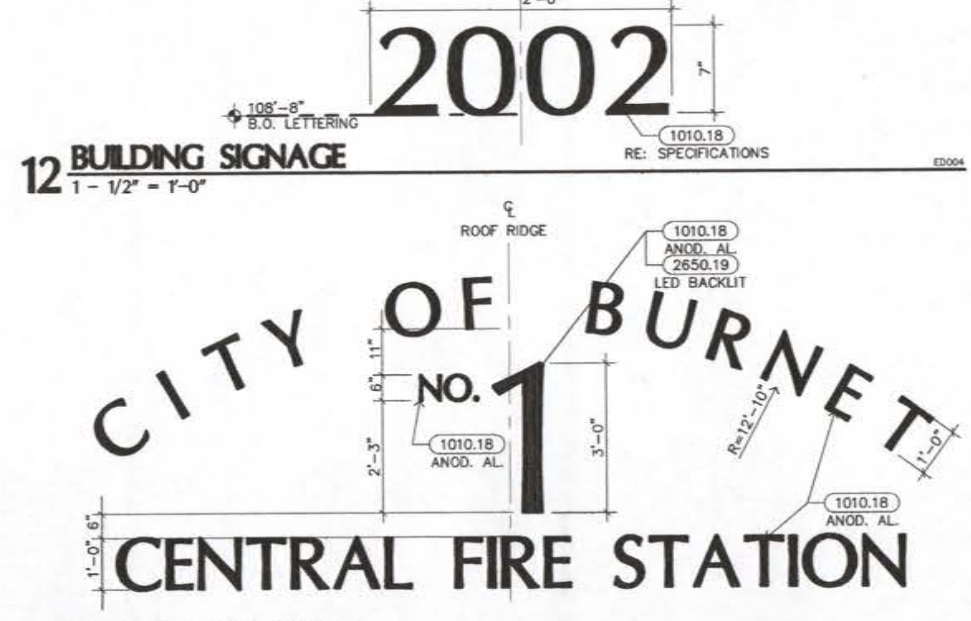
8 PARTIAL ELEVATION
1/8" = 1'-0"



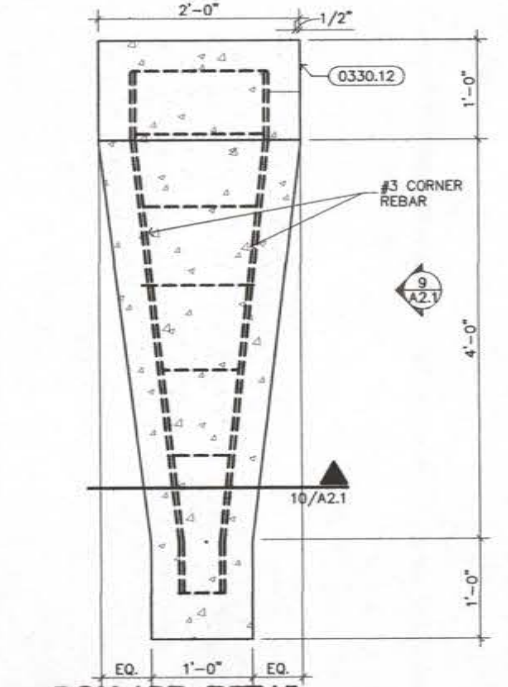
7 WEST ELEVATION
1/8" = 1'-0"



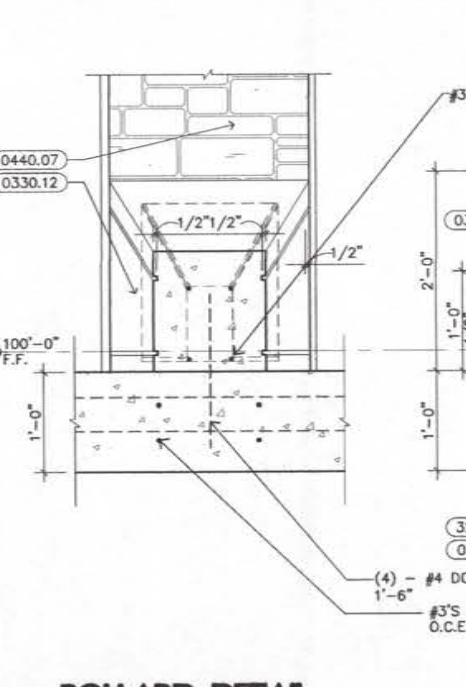
6 EAST ELEVATION
1/8" = 1'-0"



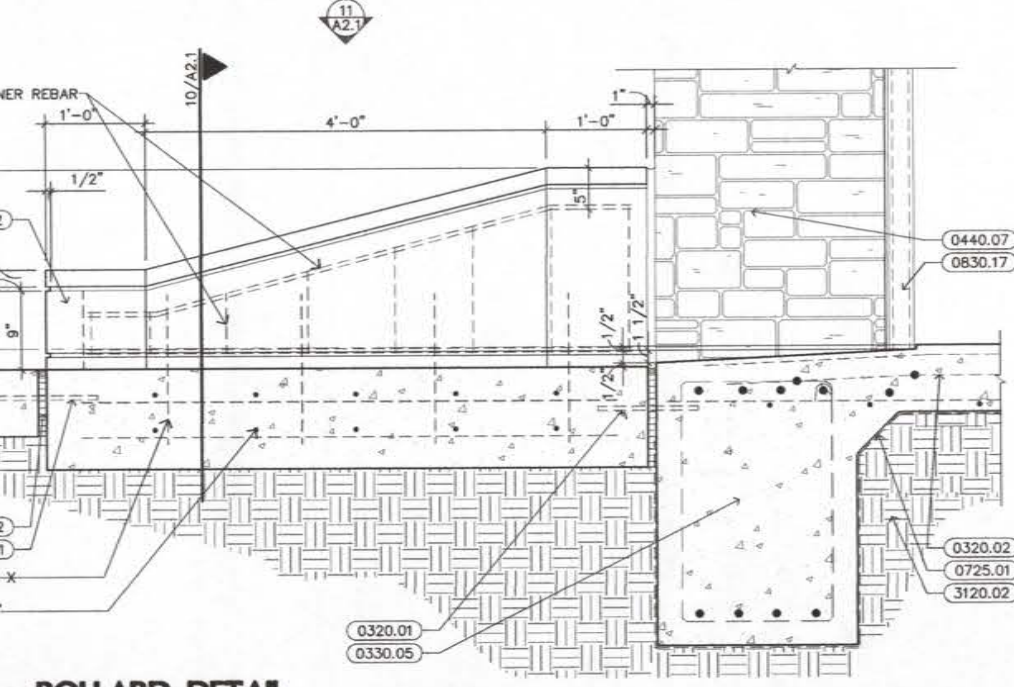
12 BUILDING SIGNAGE
1-1/2" = 1'-0"



11 BOLLARD DETAIL
1" = 1'-0"



10 BOLLARD DETAIL
1" = 1'-0"



9 BOLLARD DETAIL
1" = 1'-0"

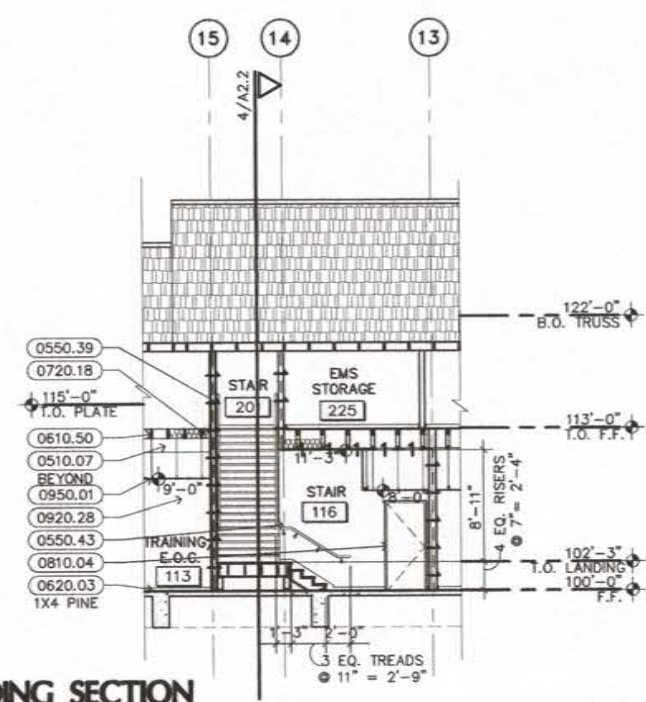
GENERAL NOTES:

1. PROVIDE SELF-ADHERING MODIFIED BITUMINOUS SHEET AIR BARRIER BEHIND MASONRY AND CEMENTITIOUS SIDING WHERE SHOWN. ELSEWHERE PROVIDE PLASTIC FILM BARRIER OVER SHEATHING ON STUD WALLS BEHIND MASONRY AND CEMENTITIOUS SIDING, AND BITUMINOUS DAMPPROOFING ON CMU BEHIND MASONRY AND CEMENTITIOUS SIDING.

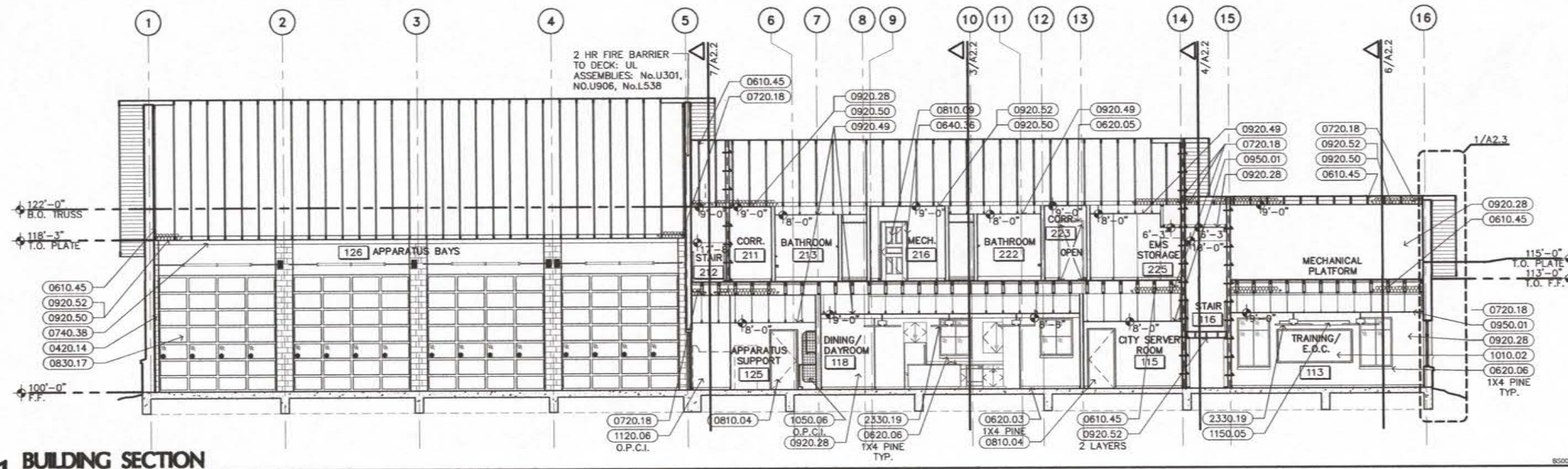
ALTERNATES
RE: SPECIFICATIONS SECTION 012300 "ALTERNATES"

- ALTERNATE 1 - ADD FLOORING AND VANITIES WITH INTEGRAL SINKS AND SHOWER PANS.
- ALTERNATE 2 - ADD SPECIAL CONCRETE FINISH IN APPARATUS BAY (ROOM 126)
- ALTERNATE 3 - ADD GENERATOR AND ATS
- ALTERNATE 4 - ADD MODIFIED DOORS
- ALTERNATE 5 - ADD MODIFIED WINDOWS
- ALTERNATE 6 - ADD ALERTING SYSTEM

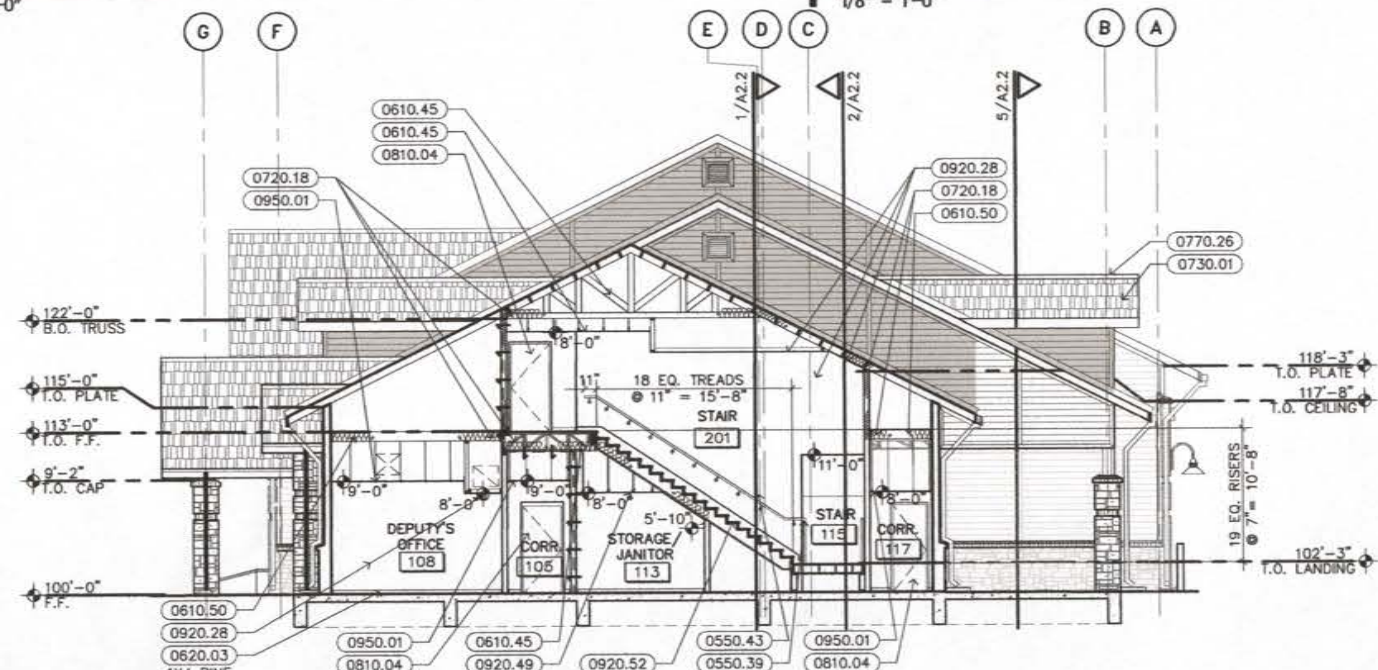
NOT FOR REGULATORY APPROVAL, PERMITTING, OR CONSTRUCTION



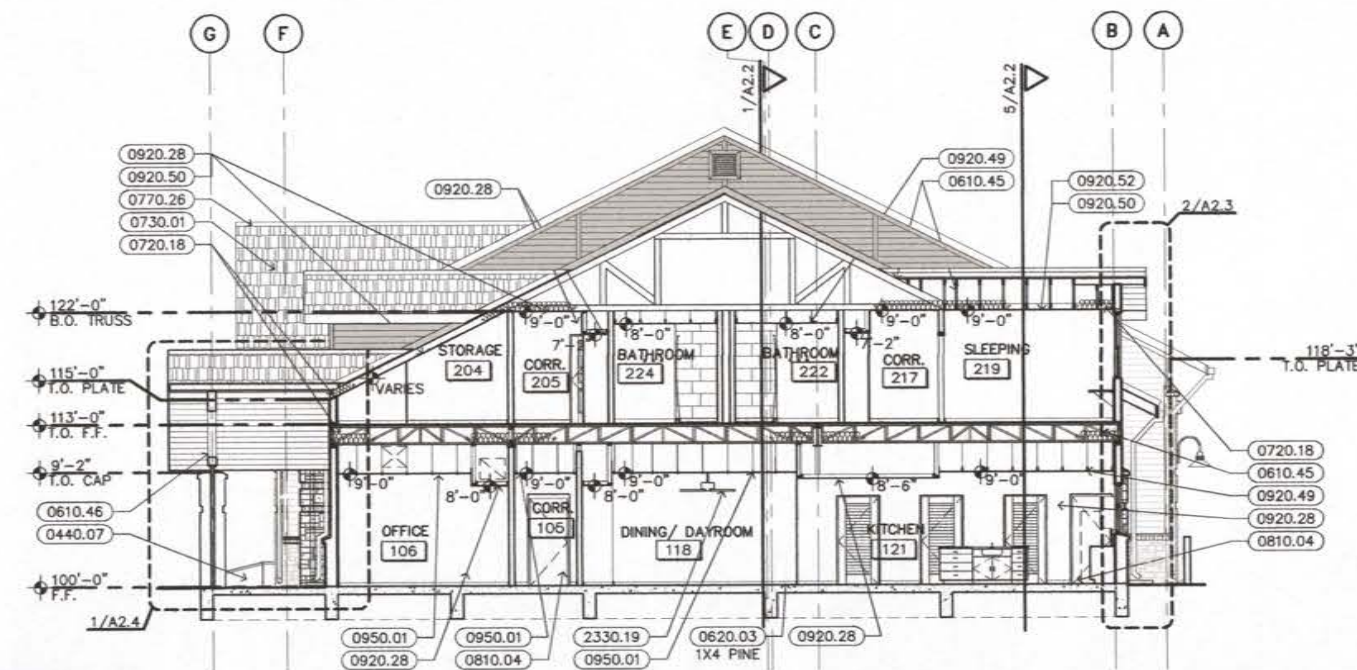
2 BUILDING SECTION
1/8" = 1'-0"



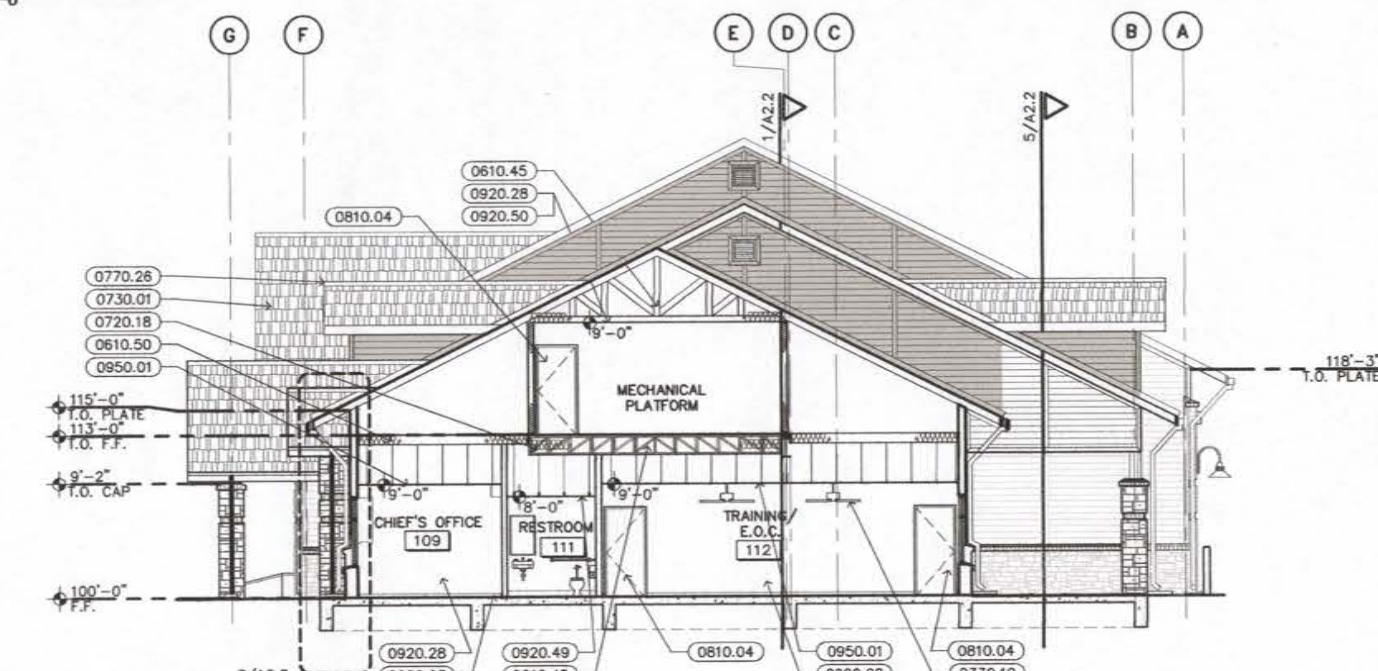
1 BUILDING SECTION
1/8" = 1'-0"



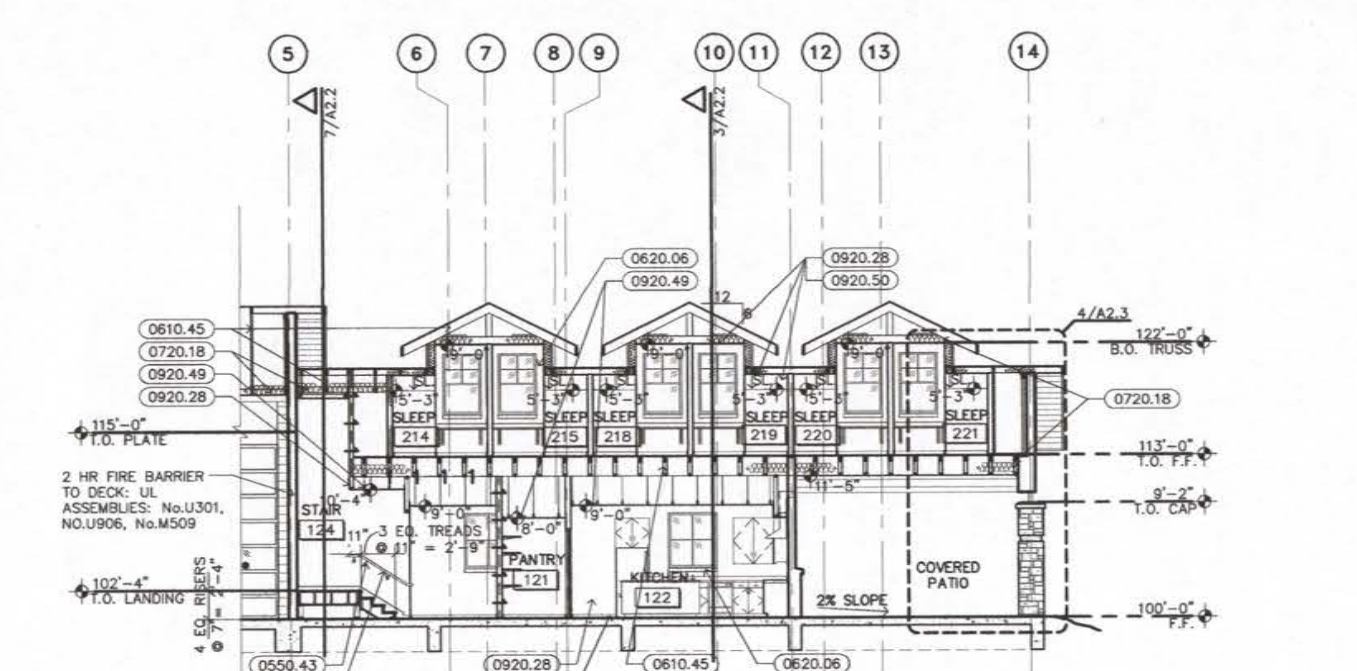
4 BUILDING SECTION
1/8" = 1'-0"



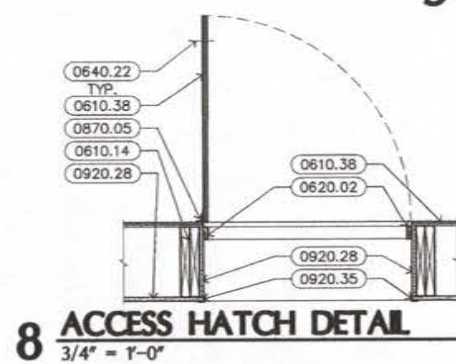
3 BUILDING SECTION
1/8" = 1'-0"



6 BUILDING SECTION
1/8" = 1'-0"

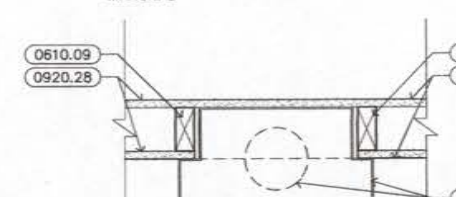


5 BUILDING SECTION
1/8" = 1'-0"

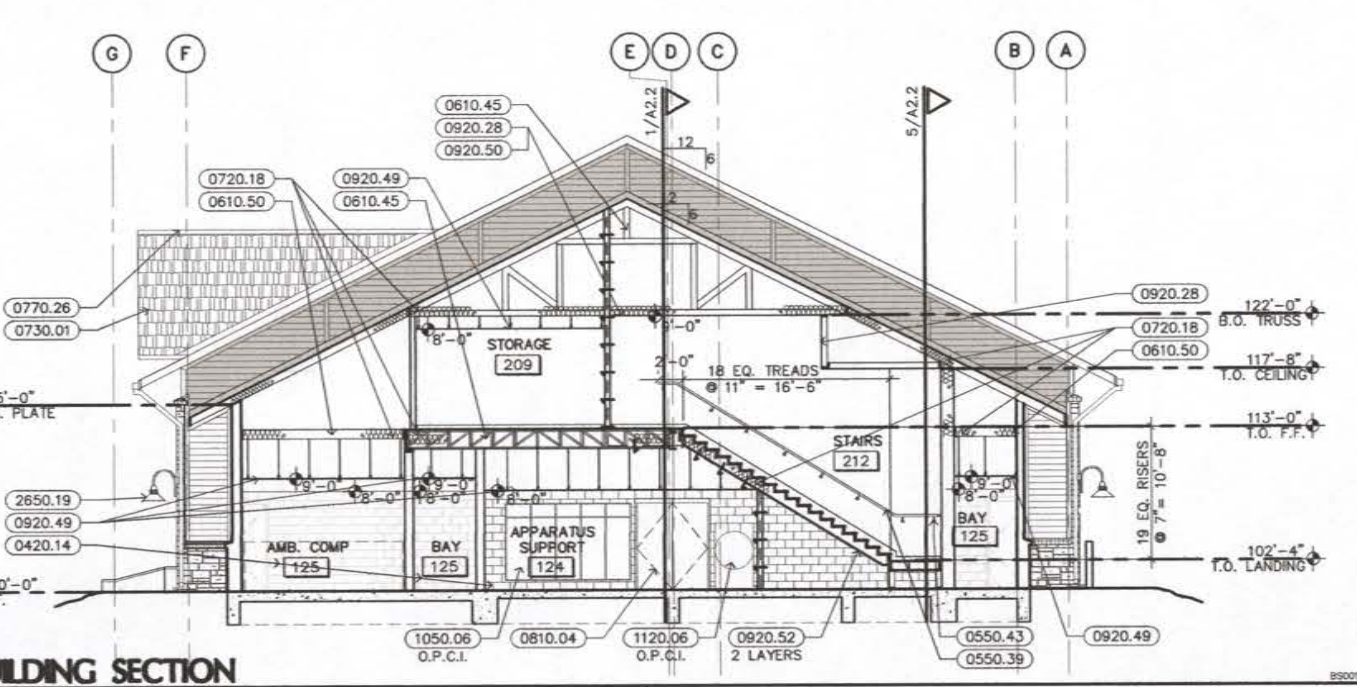


8 ACCESS HATCH DETAIL
3/4" = 1'-0"

NOTE: NUMBER, TYPE AND LOCATIONS OF FIRE EXTINGUISHERS TO BE DETERMINED BY THE FIRE MARSHAL



9 FIRE EXTINGUISHER DETAIL
3/4" = 1'-0"



7 BUILDING SECTION
1/8" = 1'-0"

KEYNOTES

- DIVISION 04 - MASONRY**
- 0420.14 8" CONCRETE MASONRY UNITS
- 0440.07 STONE VENEER
- DIVISION 05 - METALS**
- 0510.07 STEEL BEAM (RE: STRUCTURAL)
- 0550.39 1 1/4" DIAMETER STANDARD STEEL PIPE
- 0510.38 HANDRAIL (3'-0" HIGH U.N.O.)
- 0550.43 HANDRAIL BRACKET
- DIVISION 06 - WOOD, PLASTICS, & COMPOSITES**
- 0610.09 2 X 4 WOOD STUDS AT 16" O.C.
- 0610.14 2 X 12 WOOD FRAMING
- 0610.38 3/4" PLYWOOD
- 0610.45 PRE-FABRICATED WOOD TRUSS (RE: STRUCTURAL)
- 0610.46 HEAVY TIMBER WOOD TRUSS
- 0610.50 2 X 10 CEILING JOISTS @ 16" O.C.
- 0620.02 1X HARDWOOD TRIM
- 0620.03 1X HARDWOOD BASE
- 0620.05 WOOD DOOR CASING
- 0620.06 WOOD WINDOW CASING
- 0640.22 WIRE PULLS
- 0640.36 INTERIOR WOOD DOOR FRAME
- DIVISION 07 - THERMAL & MOISTURE PROTECTION**
- 0720.18 BATT INSULATION (R-30 @ ATTIC/CEILING)
- 0730.01 COMPOSITION SHINGLES
- 0740.38 1X4 FIBER REINFORCED CEMENTITIOUS TRIM
- 0770.26 RIDGE VENT
- DIVISION 08 - OPENINGS**
- 0810.04 HOLLOW METAL DOOR AND FRAME
- 0810.09 RAIL AND STILE PANELED WOOD DOOR
- 0830.17 UPWARD-ACTING SECTIONAL DOOR
- 0870.05 CONTINUOUS FRAMING HINGE
- DIVISION 09 - FINISHES**
- 0920.28 5/8" GYPSUM BOARD (TYPE X)
- 0920.35 CORNER BEAD, TYPICAL
- 0920.49 5/8" GYPSUM BOARD ON METAL SUSPENSION SYSTEM
- 0920.50 5/8" RESILIENT CHANNELS @ 16" O.C.
- 0920.52 5/8" GYPSUM BOARD, MOISTURE RESISTANT (TYPE X)
- 0950.01 SUSPENDED ACOUSTICAL LAY-IN TILE CEILING (2' X 2')
- DIVISION 10 - SPECIALTIES**
- 1010.02 MARKERBOARD
- 1040.03 FIRE EXTINGUISHER AND SEMI-RECESSED CABINET
- 1050.06 BUNKER GEAR RACK
- DIVISION 11 - EQUIPMENT**
- 1120.06 CLOTHES EXTRACTOR
- 1150.05 WALL-MOUNTED PROJECTION SCREEN. PROVIDE BLOCKING IN WALL AS REQUIRED
- DIVISION 23 - HEATING, VENTILATING, & AIR-CONDITIONING (HVAC) (RE: MECHANICAL)**
- 2330.19 CEILING FAN
- DIVISION 26 - ELECTRICAL (RE: ELECTRICAL)**
- 2650.19 EXTERIOR LIGHT FIXTURE

ALTERNATES

- RE: SPECIFICATIONS SECTION 012300 "ALTERNATES"
- ALTERNATE 1 - ADD FLOORING AND VANITIES WITH INTEGRAL SINKS AND SHOWER PANS.
 - ALTERNATE 2 - ADD SPECIAL CONCRETE FINISH IN APPARATUS BAY (ROOM 126)
 - ALTERNATE 3 - ADD GENERATOR AND ATS
 - ALTERNATE 4 - ADD MODIFIED DOORS
 - ALTERNATE 5 - ADD MODIFIED WINDOWS
 - ALTERNATE 6 - ADD ALERTING SYSTEM

NOT FOR REGULATORY APPROVAL, PERMITTING, OR CONSTRUCTION