

RESOLUTION NO. R2023-25

A RESOLUTION BY THE CITY COUNCIL OF THE CITY OF BURNET, TEXAS, CONDITIONALLY APPROVING THE PRELIMINARY PLAT ESTABLISHING SOUTH HWY 281 DELAWARE COMMERCIAL PLAT, CONSISTING OF APPROXIMATELY 3 COMMERCIAL LOTS ON 19.65 ACRES OUT OF ABST A0398 SUSANO HERNANDEZ & ABST 1018 FRANCICO YBARRO, ABST. 29 WASHINGTON TRACT

Whereas, the Planning and Zoning Commission conducted a public hearing on this application on April 3, 2023; and

Whereas, the Planning and Zoning Commission did recommended approval of the application on April 3, 2023; and

Whereas, City Council conducted a public hearing on this application on April 11, 2023.

NOW, THEREFORE, BE IT RESOLVED BY CITY COUNCIL OF THE CITY OF BURNET, TEXAS, THAT:

Section 1. Findings. That the recitals to this Resolution are incorporated herein for all purposes.

Section 2. Approval. The Preliminary Plat Establishing South Hwy 281 Delaware Commercial Plat is hereby approved.


Section 3. Open Meetings. It is hereby officially found and determined that the meeting at which this resolution was passed was open to the public and that public notice of the time, place and purpose of said meeting was given as required by the Open Meetings Act.

Section 4. Effective Date. That this resolution shall take effect immediately upon its passage, and approval as prescribed by law.

PASSED AND APPROVED this the 11th day of April 2023.

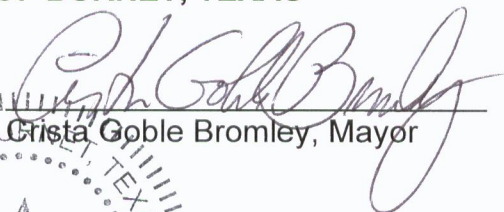
CITY OF BURNET, TEXAS

ATTEST:



Kelly Dix, City Secretary





Crista Goble Bromley, Mayor

Exhibit "A"
Tract



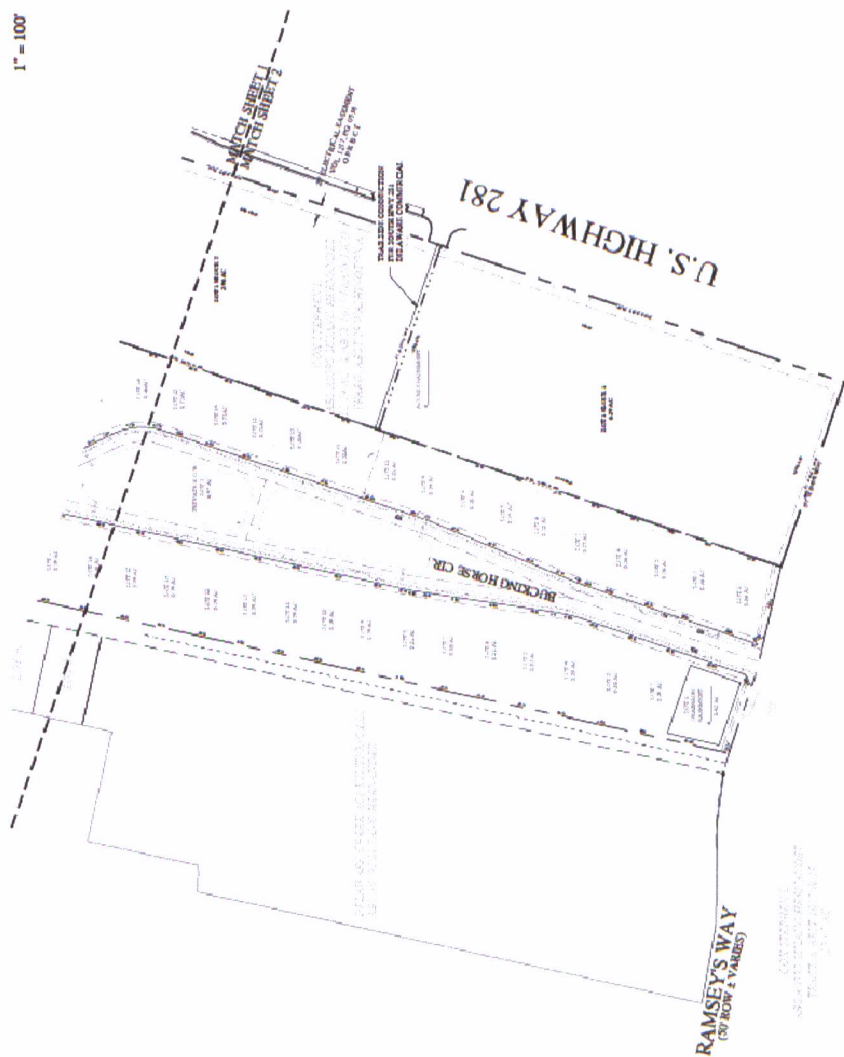


DATE: 03/01/2023
PROJECT NO.: 22-000.0
DESIGNED BY: ROP
CHECKED BY: JMG

PLAT (2 OF 2)
PRELIMINARY PLAT
SOUTH HWY 281
DELAWARE COMMERCIAL



1" = 100'



- NOTES:
- 1) SEE SHEET 01 FOR THE COMPLETE PLAT.
 - 2) CHANGE CALL TO INDICATE SHARED ACCESSIBLE CONNECTIONS.
 - 3) VERIFY ALL UTILITIES AND CONDUITS ARE SHOWN AND ACCESSIBLE TO ALL.
 - 4) VERIFY ALL UTILITIES TO GOVERNMENT TO ALL.
 - 5) VERIFY ALL UTILITIES TO GOVERNMENT TO ALL.
 - 6) VERIFY ALL UTILITIES TO GOVERNMENT TO ALL.
 - 7) VERIFY ALL UTILITIES TO GOVERNMENT TO ALL.
 - 8) VERIFY ALL UTILITIES TO GOVERNMENT TO ALL.
 - 9) VERIFY ALL UTILITIES TO GOVERNMENT TO ALL.
 - 10) VERIFY ALL UTILITIES TO GOVERNMENT TO ALL.

LEGEND

--- SHARED ACCESSIBLE CONNECTION

--- SHARED ACCESSIBLE CONNECTION

--- SHARED ACCESSIBLE CONNECTION

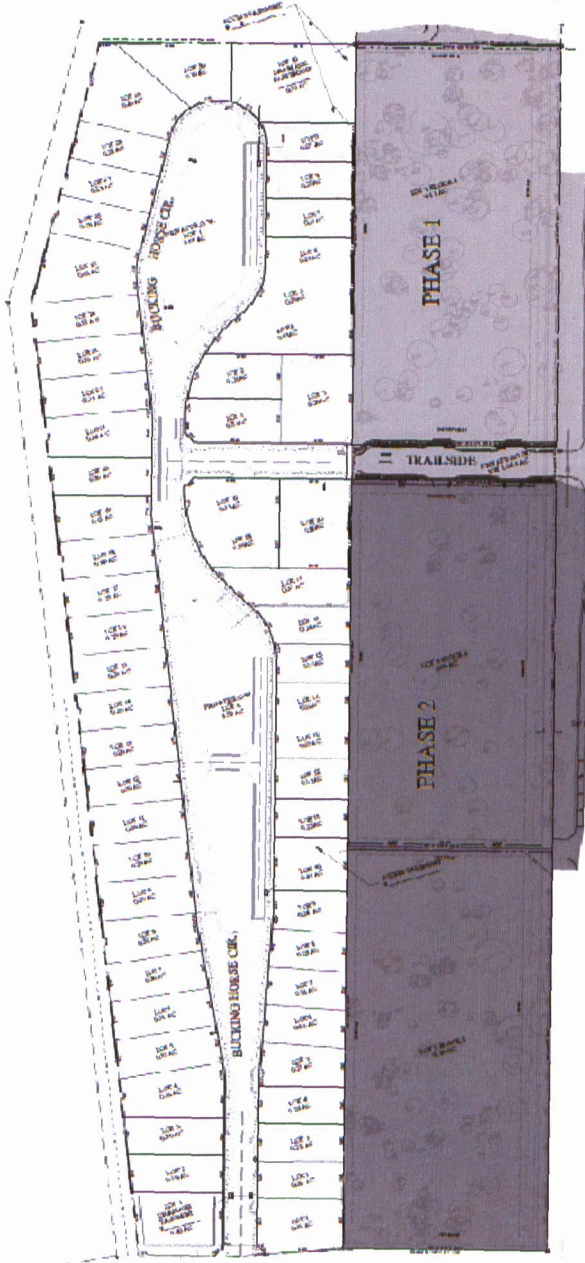
--- SHARED ACCESSIBLE CONNECTION

--- SHARED ACCESSIBLE CONNECTION

Exhibit "C" Phasing Plan



NOTE:
1. THIS PLAN IS FOR INFORMATION ONLY AND DOES NOT CONSTITUTE A CONTRACT. THE CONTRACTOR SHALL BE RESPONSIBLE FOR OBTAINING ALL NECESSARY PERMITS AND APPROVALS FROM THE LOCAL GOVERNMENT.



U.S. HIGHWAY 281
(150' ROW ± MAY VARY)

CONSTRUCTION OF THIS PROJECT IS SUBJECT TO THE APPROVAL OF THE LOCAL GOVERNMENT. THE CONTRACTOR SHALL BE RESPONSIBLE FOR OBTAINING ALL NECESSARY PERMITS AND APPROVALS FROM THE LOCAL GOVERNMENT.

ELECTRICAL CEMENT
AND CONCRETE
WORK

RAMSEY'S WAY
(50' ROW ± VARYS)