

ROAD CLOSURE ALERT

Plan ahead! The following streets will be closed for maintenance on the dates listed. Use alternate routes when needed.

Monday 4/14 & Tuesday 4/15 ● **Red Zone**

Streets Affected:

- E Johnson St (Between N Boundary St & N Rhomberg St)
- E Post Oak St (Between N Vanderveer St & N Wood St)
- Highland Dr (Between E Tate St & E Johnson St)
- Wofford Dr (Between Highland Dr & N Hill St)
- Vanderveer St (Between E Graves St & 712 Vanderveer St)

Wednesday 4/16 & Thursday 4/17 ● **Blue Zone**

Streets Affected:

- Hamilton St (Between 3rd St & 5th St)
- Oak St (Between 6th St and South to End)
- 5th St (Between Hamilton St & Oak Pl)
- N Boundary St (Between Evergreen Cir & E Graves St)
- Corder Lane (Between N Main St & Vanderveer St)
- Leffingwell Ln (Small window from Hwy 29 to Urgent Care Entrance midpoint)
- Wranglers Way (East of 114 Wranglers Way to END)
- Roundup Circle (ALL)
- Natalie's Point (ALL)
- Shady Grove Parkway (Between 101 Shady Grove Pkwy and Culdesac End)
- Amy Street (ALL)

Tuesday 4/22 & Wednesday 4/23 ● **Yellow Zone**

Streets Affected:

- Sunday Drive (From Yellow Ribbon Trail South to 254 Yellow Ribbon Trail)
- Wrangler's Way (South half of road from Hwy 2341 to East of 114 Wrangler's Way)
- 3rd Street (From Hamilton St East to midpoint)
- Tanner Ct North (ALL)
- Sherrard St (Between 2nd St & 5th St)
- Denny Fox Drive (ALL)
- Fox Circle (From 135 Fox Cir to 113 Fox Cir NW Side)
- Rachel Loop (Between 204 Rachel Loop and Delaware Springs Blvd)
- Yellow Ribbon Trail (ALL)



Thursday 4/24 & Friday 4/25 ◆ Aqua Zone



Streets Affected:

- E Tate Street (Between N Rhomberg and Hill St midpoint)
- E Brier Street (Between N Pierce St and N Wood St)
- Short Street (Between E Taggard St & Dixie St)
- Hamilton Street (From South side of 3rd St North to End)
- Silver Street (ALL)
- Leffingwell Ln (From Hwy 29 to Culdesac End, excluding access window)
- W Taggard Street (Between N Main St & West to midpoint)
- Johnson Street (Begin west side of Amy Street to East End)
- Adam Street (ALL)



Saturday 4/26 & Sunday 4/27 ✿ Light Pink Zone



Streets Affected:

- 3rd Street (From N Main St- East to Intersect Student Center)
- 5th Street (Between Hwy 281 & N Main)
- 6th St (Between Sherrard St & Hwy 281)
- 6th St (Between Hwy 281 & N Main St)
- 7th St (Between Sherrard St & Hwy 281)
- N Main St (Between 6th St & E Graves Street)
- Ramsey's Way (Between Hwy 281 & 100 Honey Rock Blvd)



Tuesday 4/29 & Wednesday 4/30 ○ White Zone



Streets Affected:

- Sherrard Street (Between 5th Street & 9th Street)
- Wrangler's Way (North half of road from Hwy 2341 to East of 114 Wrangler's Way)
- Sunday Drive (From Hwy 281 to South of Double Circle)
- Double Circle (ALL)
- Honey Rock Blvd (From 100 Honey Rock Blvd to Cobblestone)
- Secret Circle (ALL)
- Fox Circle (From 111 Fox Cir to Delaware Springs Blvd SE Side)
- Rachel Loop (From 204 Rachel Loop to F Rd)
- Tanner Court (South Culdesac ALL)



Thursday 5/1 & Friday 5/2 ● Light Orange Zone



Streets Affected:

- Shady Grove Parkway (From 101 Shady Grove Pkwy through Andy's Point)
- Andy's Point (ALL)
- Oak Street (Between 4th Street & 6th Street)
- Vanderveer Street (Between E Graves St and N END)
- N Boundary Street (Between E Hwy 29 & E Post Oak St)
- Kerr Street (Between N Pierce St & N Rhomberg St)
- Mildred Avenue (Between Wofford Dr & Culdesac End)
- Brier St (Between Hwy 281 & N Main St)
- E Johnson St (Between N Hill Street & Amy Street)
- N Rhomberg St (From 801 N Rhomberg St to E Graves Street)
- Dixie St (ALL)
- W Taggard Street (Between midpoint & Hwy 281)
- E Taggard Street (Between N Pierce St & Vanderveer Street)



Saturday 5/3 & Monday 5/5 ● Dark Purple Zone



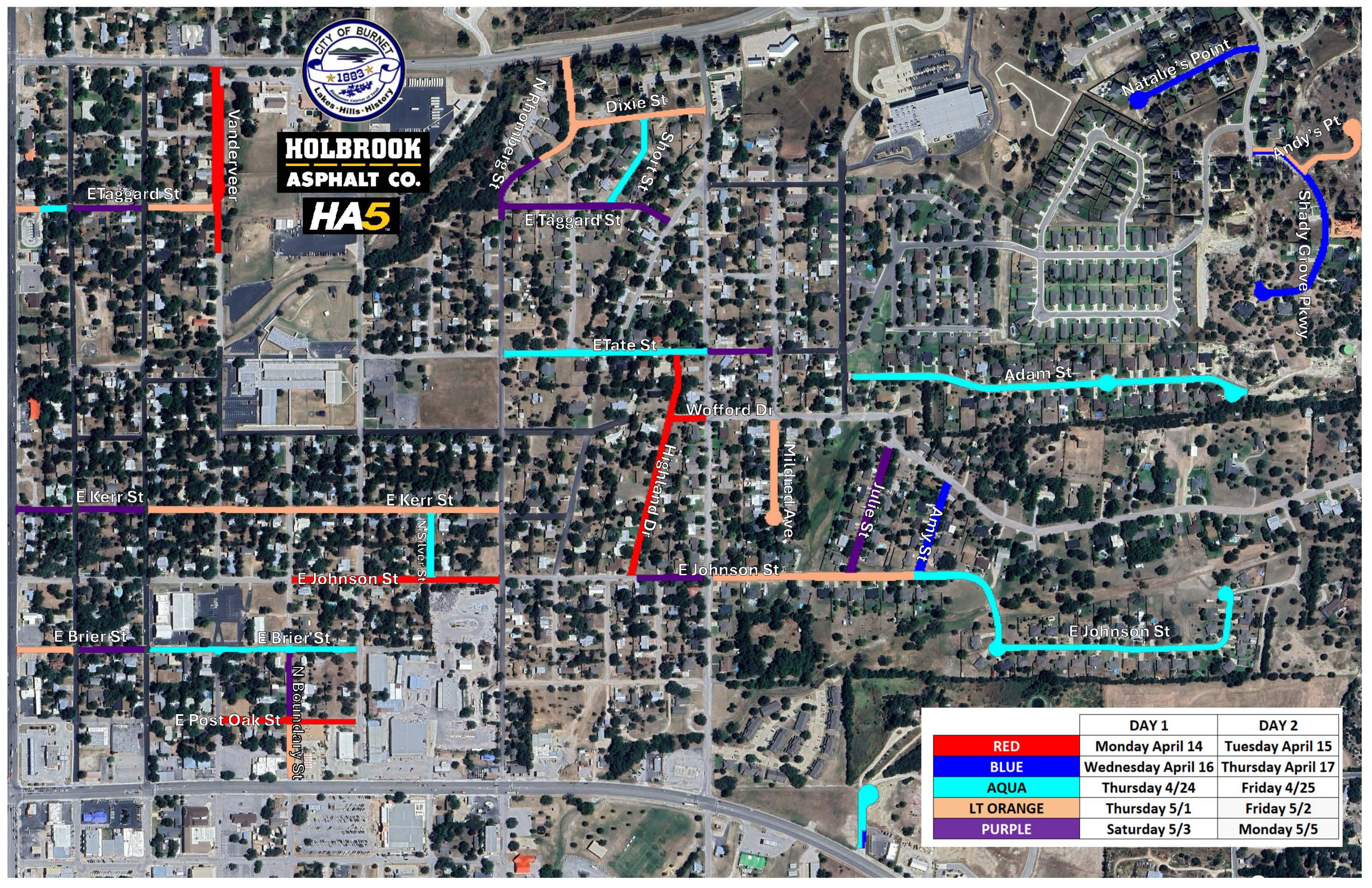
Streets Affected:

- Evergreen Circle (ALL)
- E Taggard Street (Between N Main St & N Pierce Street)
- E Taggard Street (Between N Rhomberg St & Lewis Drive)
- N Rhomberg Street (Between S End of 801 N Rhomberg St to South of 714 N Rhomberg)
- Kerr Street (Between Hwy 281 & N Main Street)
- Kerr Street (Between N Main Street & N Pierce Street)
- E Brier Street (Between N Main Street & N Pierce Street)
- Honey Rock Blvd (From Delaware Springs Blvd South to end of Cobblestone)
- Cobblestone (ALL)
- Sunday Drive (Between Double Circle and Yellow Ribbon Trail)
- Tate Street (Between N Hill Street & Mildred Avenue)
- E Johnson Street (Between Highlander Drive & N Hill Street)
- N Boundary Street (Between E Brier Street & E Post Oak Street)
- Julie Street (Between E Johnson Street & Wofford Drive)



**HOLBROOK
ASPHALT CO.**

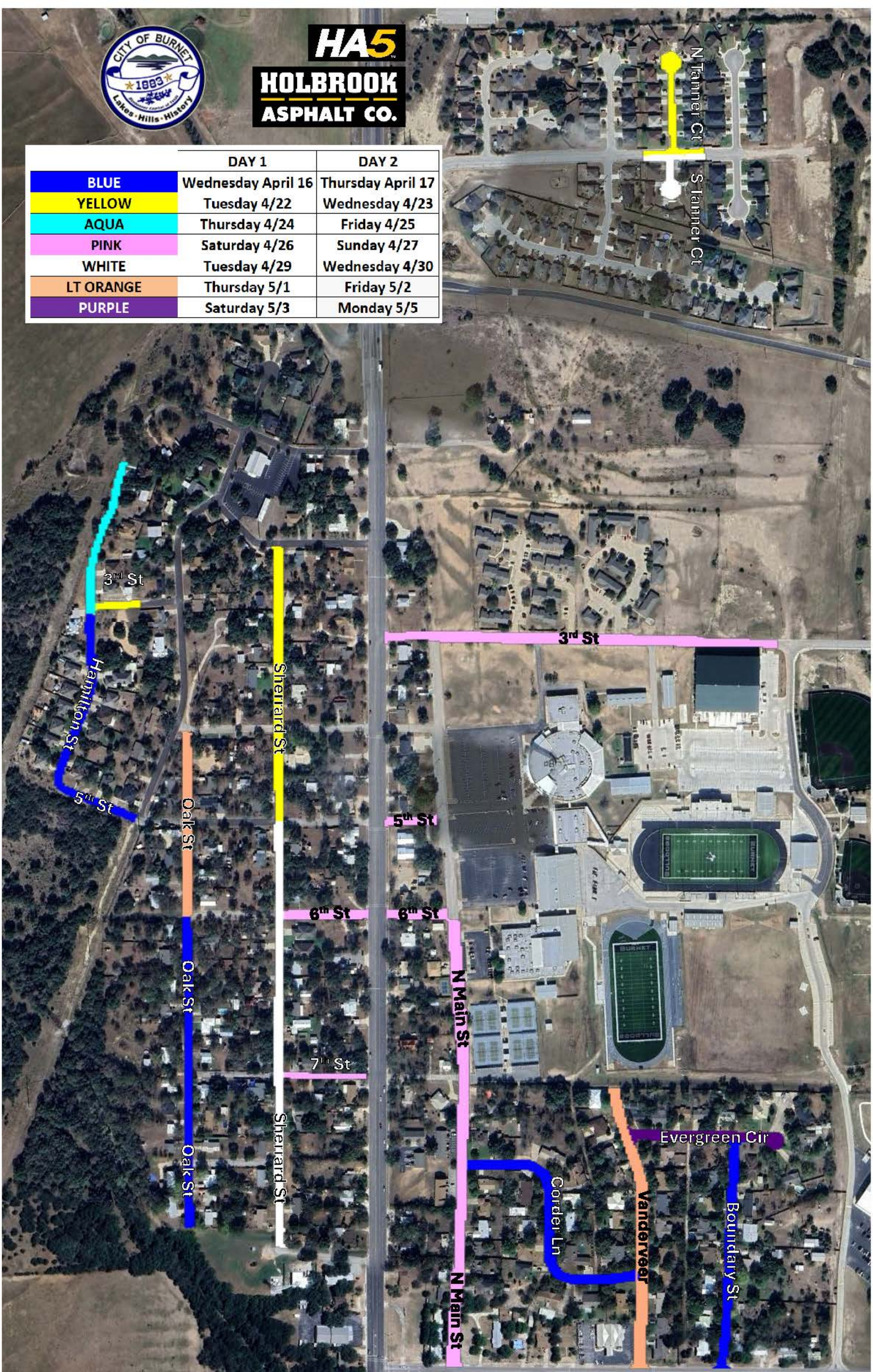
HA5



	DAY 1	DAY 2
RED	Monday April 14	Tuesday April 15
BLUE	Wednesday April 16	Thursday April 17
AQUA	Thursday 4/24	Friday 4/25
LT ORANGE	Thursday 5/1	Friday 5/2
PURPLE	Saturday 5/3	Monday 5/5



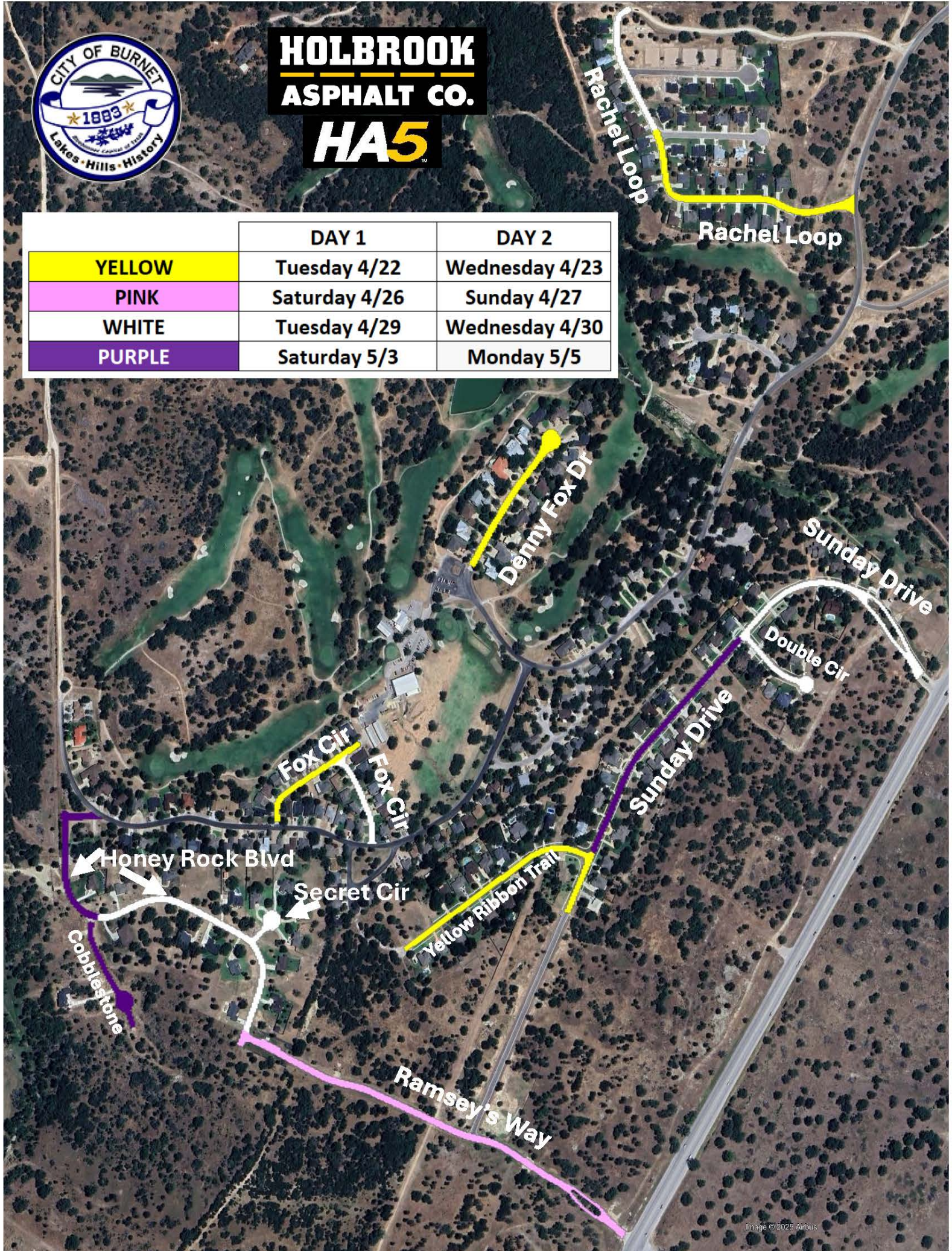
	DAY 1	DAY 2
BLUE	Wednesday April 16	Thursday April 17
YELLOW	Tuesday 4/22	Wednesday 4/23
AQUA	Thursday 4/24	Friday 4/25
PINK	Saturday 4/26	Sunday 4/27
WHITE	Tuesday 4/29	Wednesday 4/30
LT ORANGE	Thursday 5/1	Friday 5/2
PURPLE	Saturday 5/3	Monday 5/5





HOLBROOK ASPHALT CO. HA5

	DAY 1	DAY 2
YELLOW	Tuesday 4/22	Wednesday 4/23
PINK	Saturday 4/26	Sunday 4/27
WHITE	Tuesday 4/29	Wednesday 4/30
PURPLE	Saturday 5/3	Monday 5/5





HOLBROOK
ASPHALT CO.

HA5

	DAY 1	DAY 2
BLUE	Wednesday April 16	Thursday April 17
YELLOW	Tuesday 4/22	Wednesday 4/23
WHITE	Tuesday 4/29	Wednesday 4/30

Wranglers Way

Round Up Cir

Wranglers Way

Wranglers Way