

Burnet Residents:

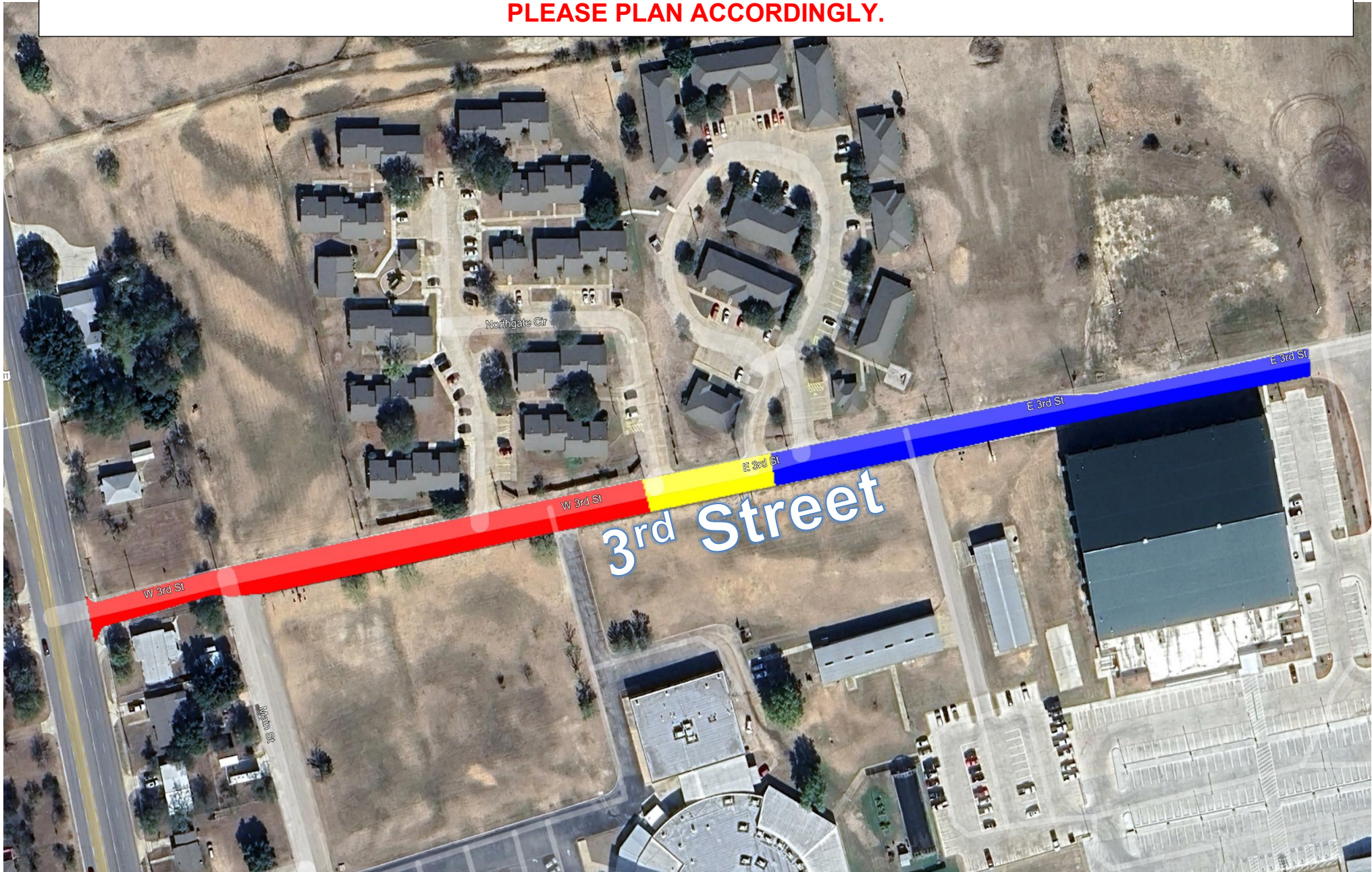
The area highlighted in **RED** will be CLOSED Monday July 7th

The area highlighted in **BLUE** will be CLOSED Tuesday July 8th

The area highlighted in **YELLOW** will be CLOSED Wednesday July 9th

All areas will be closed from 7am to 7pm

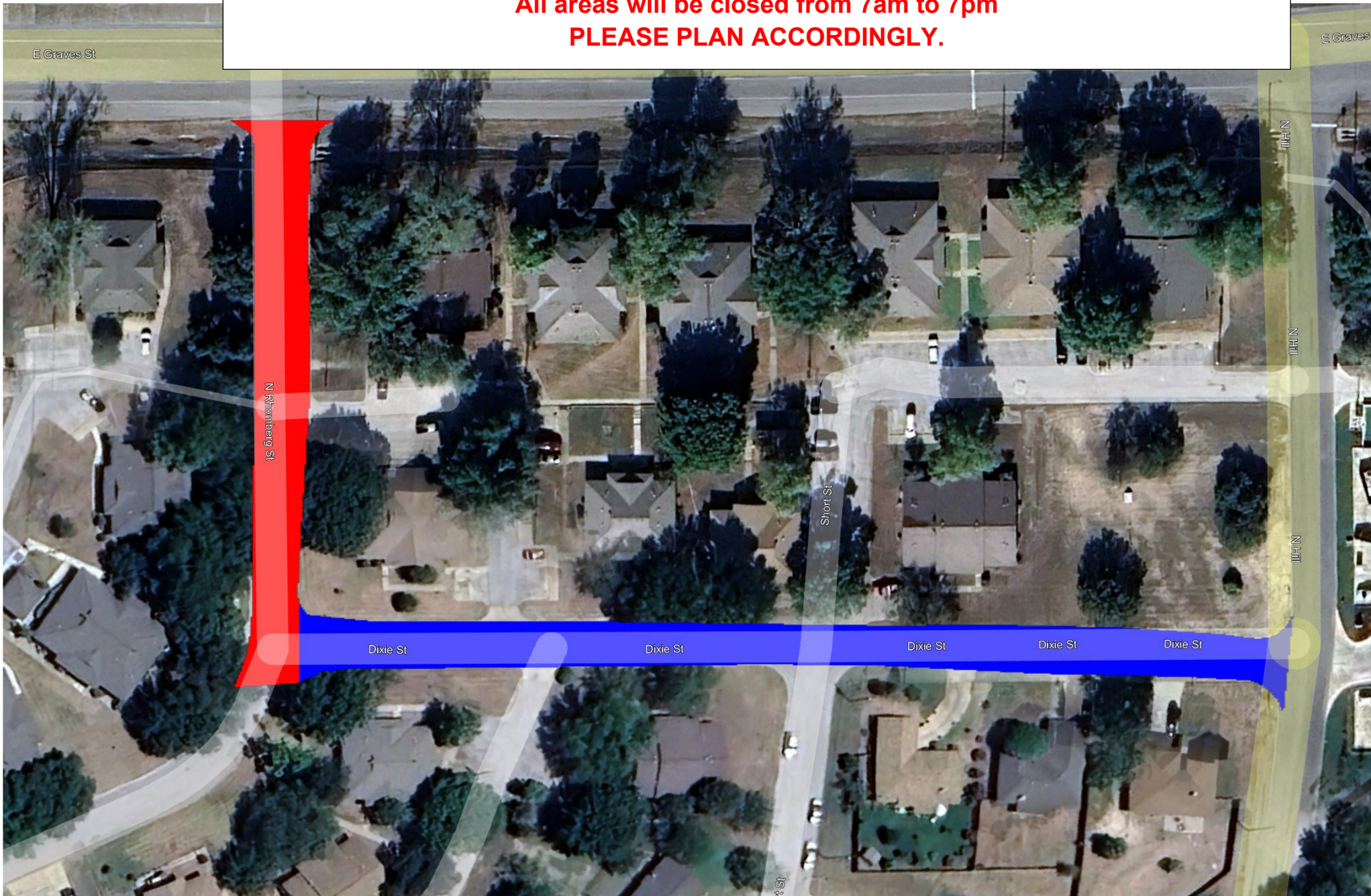
PLEASE PLAN ACCORDINGLY.



Burnet Residents:

The area highlighted in **RED** will be CLOSED on Monday July 7th
The area highlighted in **BLUE** will be CLOSED on Tuesday July 8th

All areas will be closed from 7am to 7pm
PLEASE PLAN ACCORDINGLY.



Burnet Residents:

The areas highlighted in **RED** will be CLOSED on Monday July 7th
The areas highlighted in **BLUE** will be CLOSED on Tuesday July 8th

All areas will be closed from 7am to 7pm
PLEASE PLAN ACCORDINGLY.



Burnet Residents:

The area highlighted in **YELLOW** will be CLOSED on Wednesday July 9th

All areas will be closed from 7am to 7pm

PLEASE PLAN ACCORDINGLY.



Burnet Residents:

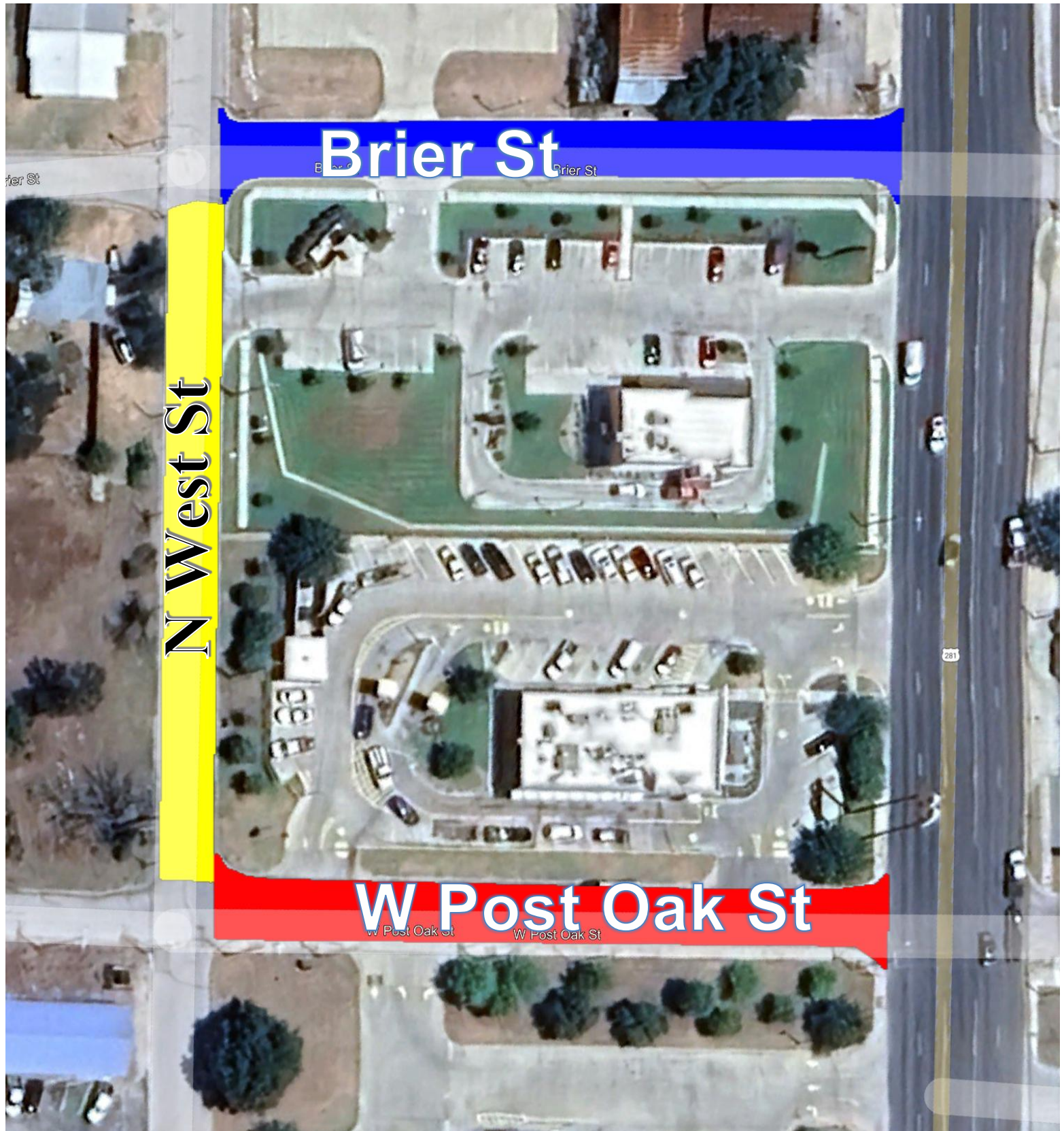
The area highlighted in **RED** will be CLOSED on Monday July 7th

The area highlighted in **BLUE** will be CLOSED on Tuesday July 8th

The area highlighted in **YELLOW** will be CLOSED Wednesday July 9th

All areas will be closed from 7am to 7pm

PLEASE PLAN ACCORDINGLY.

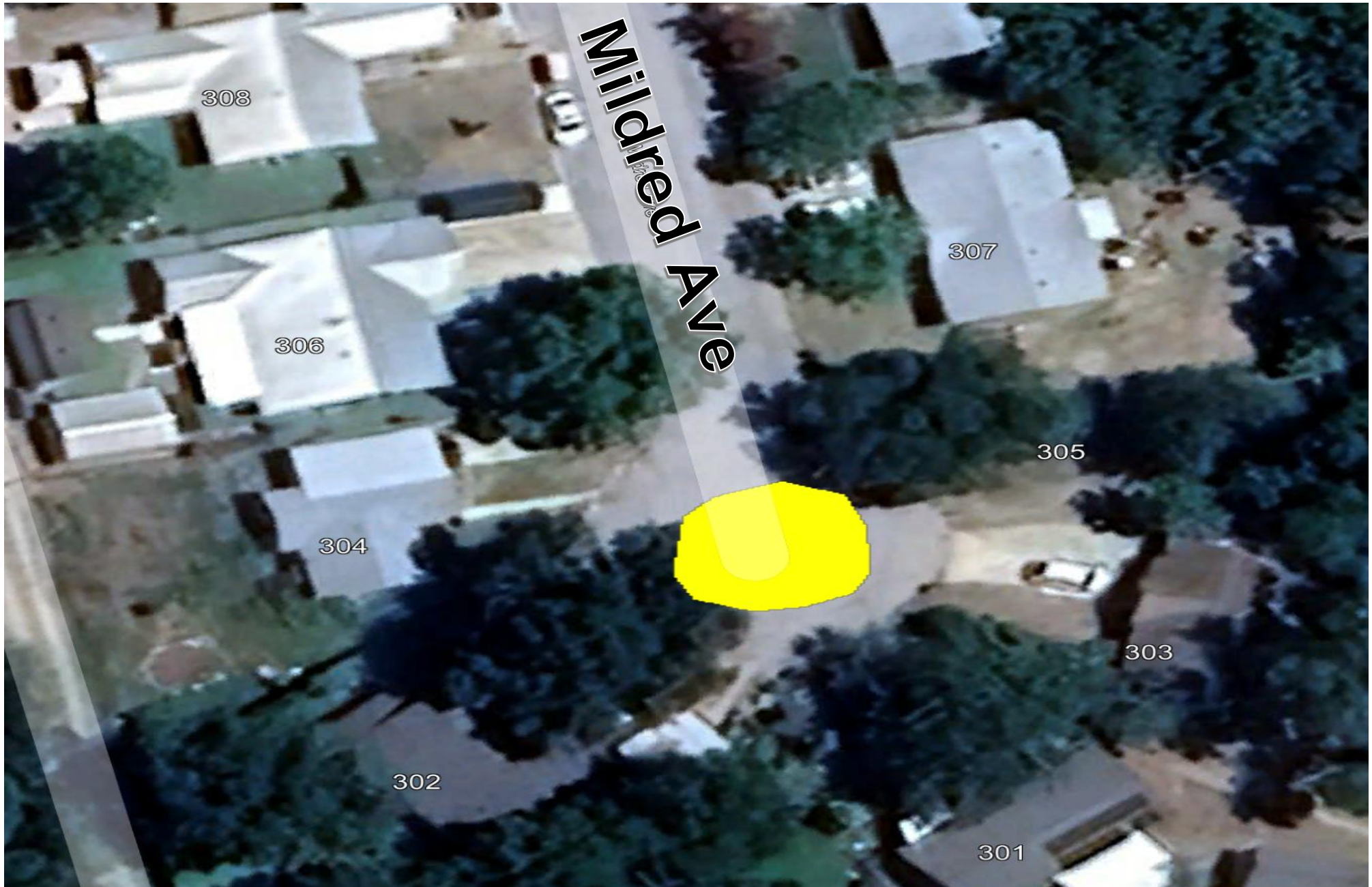


Burnet Residents:

The area highlighted in **YELLOW will be CLOSED on Wednesday July 9th**

All areas will be closed from 7am to 7pm

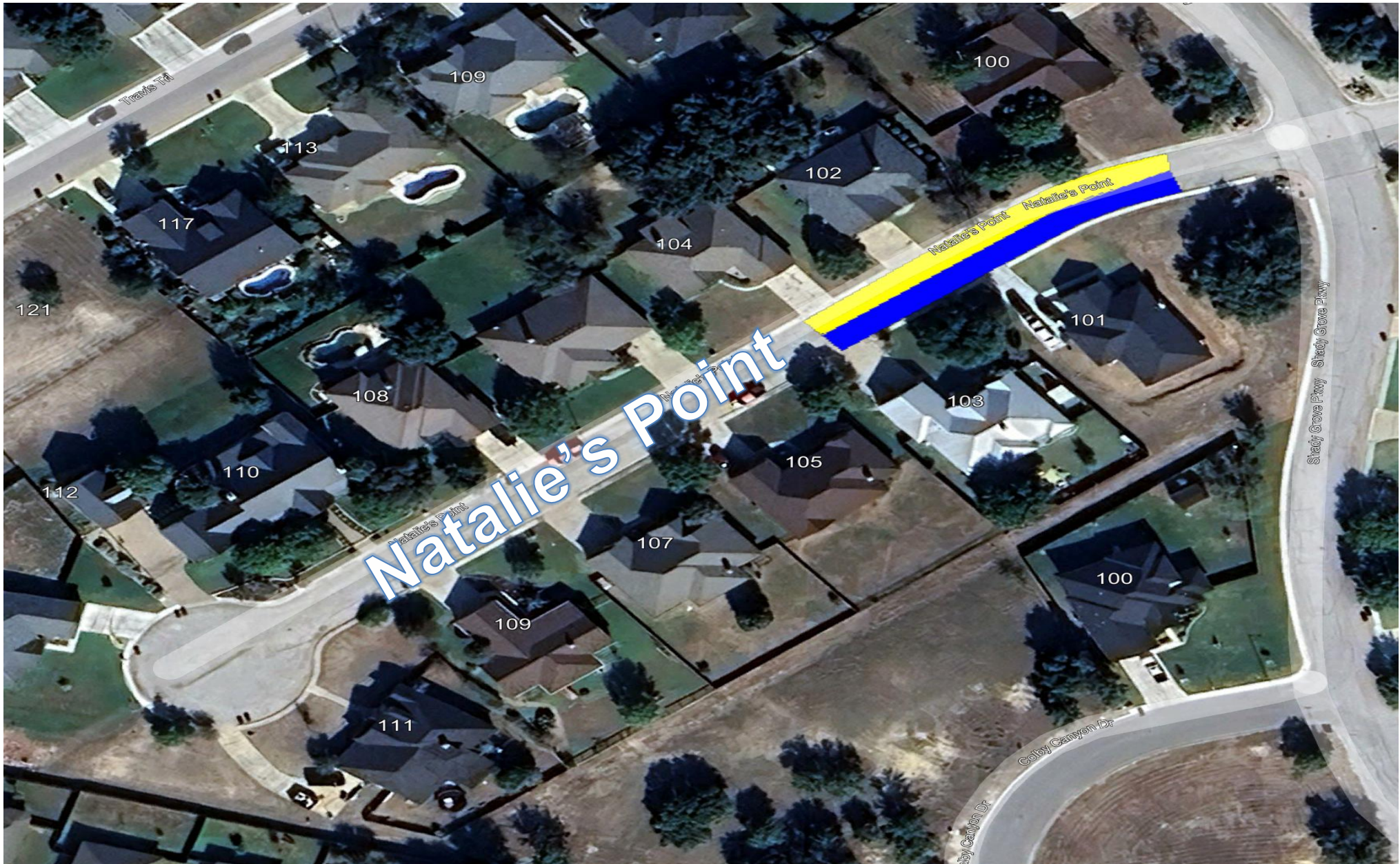
PLEASE PLAN ACCORDINGLY.



Burnet Residents:

The areas highlighted in **BLUE** will be CLOSED on Tuesday July 8th
The areas highlighted in **YELLOW** will be CLOSED Wednesday July 9th

**All areas will be closed from 7am to 7pm
PLEASE PLAN ACCORDINGLY.**



Burnet Residents:

The area highlighted in **YELLOW** will be **CLOSED** Wednesday July 9th

All areas will be closed from 7am to 7pm

PLEASE PLAN ACCORDINGLY.



Burnet Residents:

The area highlighted in **YELLOW** will be CLOSED on Wednesday July 9th

All areas will be closed from 7am to 7pm

PLEASE PLAN ACCORDINGLY.



Burnet Residents:

The area highlighted in **RED** will be CLOSED Monday July 7th

The area highlighted in **YELLOW** will be CLOSED Wednesday July 9th

All areas will be closed from 7am to 7pm both days. PLEASE PLAN ACCORDINGLY.

